

SADIE TANNER
MOSSELL ALEXANDER

UNIVERSITY OF PENNSYLVANIA
PARTNERSHIP SCHOOL

PAS Weekly

Upcoming Events

PAS Schedule

- 4/24: D Day
- 4/25: E Day
- 4/26: A Day
- 4/27: B Day
- 4/28: C Day

Spring Club Cycle Starts
April 24

GR3-8 PSSA Literacy
April 25-27

Pretzel Day
April 27

Boys Volleyball Game vs Southwark,
Sharswood @ PAS
April 27, 3:30pm

Coffee With The Principal/HSA MTG
April 28, 8:45am

PAS Musical Build Day
April 29, 9am-12pm

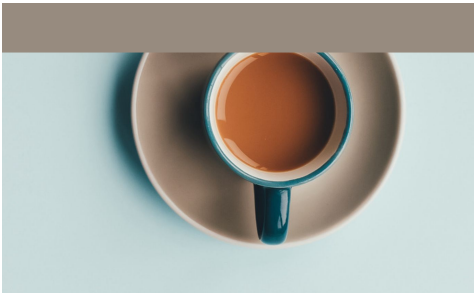
GR3-8 PSSA Math
5/1- 5/2

GR4&8 PSSA Science
5/3-5/4

3-8GR PSSA Testing

Starting Tuesday, grades 3-8 will take their annual state assessments, called the PSSA. The Pennsylvania System of School Assessment is a standards-based, criterion-referenced assessment intended to give an understanding of student and school performance as it relates to the attainment of the state academic standards. The PSSA is also often used for school placement at the special admit schools in the city. Students in grade 3-8 will take a literacy and math assessment. Students in grade 4 & 8 will also take a science assessment.

We ask that students get a good night's rest, eat breakfast each morning (or grab free breakfast in the PAS lunchroom between 8am and 8:25am) and come to school on time. If at all possible, early dismissals should be kept to a minimum so students have as much time as they to complete each test. If you have questions please reach out to me at loverton@philasd.org or to Mrs. Talbert at tsettles@philasd.org



Coffee With The Principal & HSA Meeting

Please join us on Friday, April 28 at 8:45am for Coffee With The Principal followed by a brief HSA meeting. We will meet in the lunchroom or online at the Zoom link below.

<https://zoom.us/j/9751540779>

Meeting ID: 975 154 0779

Password 820583



Reminders

- 1. **If you are moving/not returning to PAS next year**, please contact Assistant Principal Johnson in writing or email (kdjohnson2@philasd.org) as soon as possible. This information will assist us in planning and reorganizing for the upcoming school year. We have a number of students on our waiting list for each grade who would like to attend PAS if there is space.
- 2. **The Annual School Experience Survey** is designed to find out what you think about our school - school safety, your child’s learning experience, family engagement, and more. The District also uses survey responses to learn what is working in schools and where to give schools more support. Student ID is not required. **Please take 5 minutes to share your feedback.**
- 3. The School District of Philadelphia has consolidated its **tutoring services**. Check it out [here!](#)
- 4. **Attendance matters** for student learning progress. We encourage our students to attend school 95% or more of instructional days. That is 171 days out of 180 days or just 1 absence a month. With that said, please do not send your child to school if they are sick. You can see your child’s absences in your Parent Portal. If your child is absent please **email your child’s teacher with cc to Secretary Bullock (abullock@philasd.org) and Nurse Natanya. (ngornstein@philasd.org)**. Please review the [Student & Family Handbook](#) for more information on the attendance policy as well as these district expectations: [Attendance Expectations](#) & [School Board Policy Regarding Attendance](#)
- 5. **Parent volunteers (including trip chaperones)** need their [clearances](#). Please upload them, along with your covid 19 vaxx card to this [form](#).
- 6. **PAS gear is back in stock**. To order, visit the [HSA store](#) or stop by the office for an order form.
- 7. **Uniform guidelines** can be found [here](#).

— THE —
SPECIALIST
CORNER

Please visit the links below to learn more about what our students are learning in Ms. Falcon’s art class, Ms. Willbach’s SEL class, Ms. Gilday’s technology program and Ms. Zimmer’s music program:

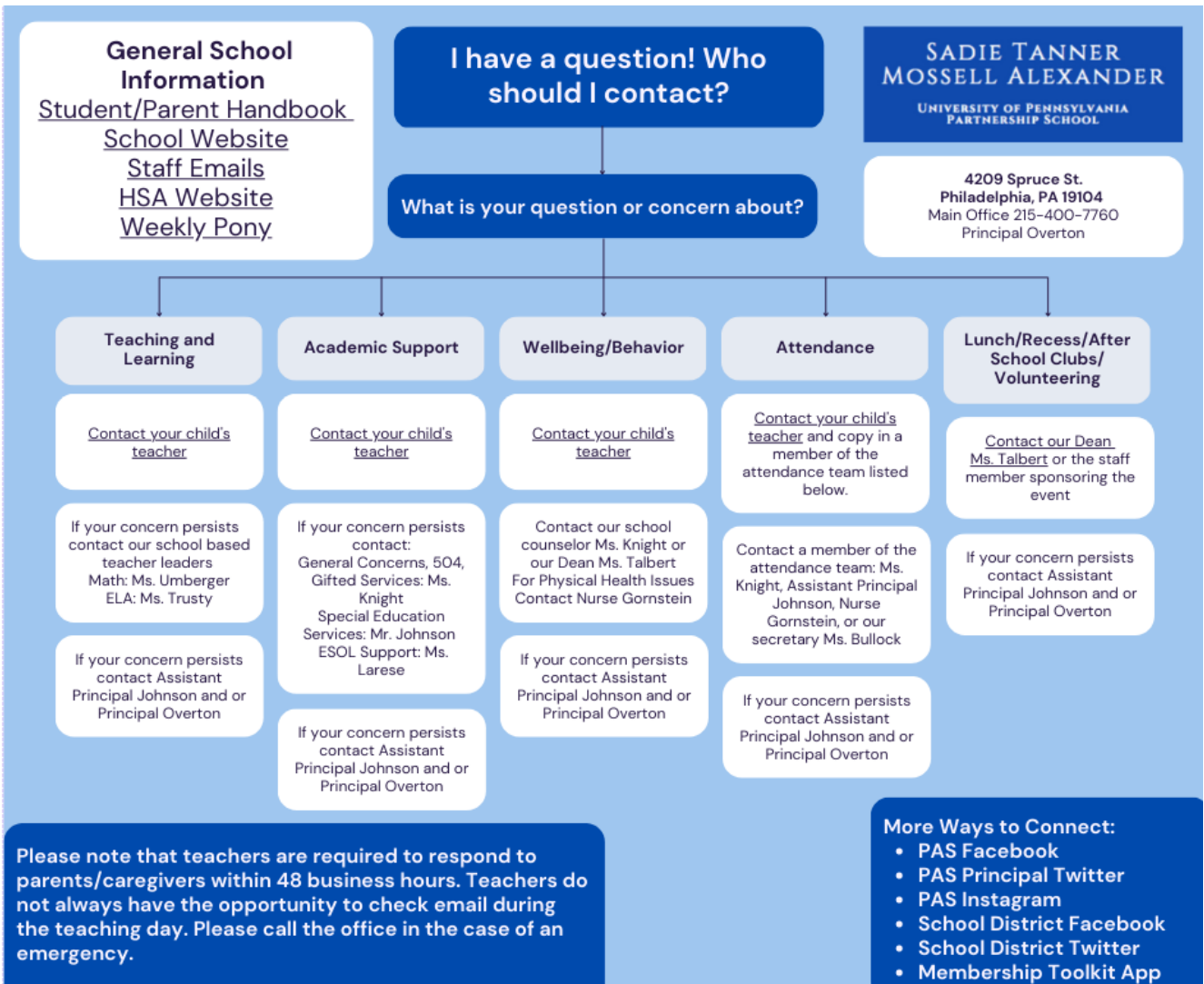
[PAS Art Class](#) - **NEW!** Follow Ms. Falcon on Instagram @ pas_artists

[PAS SEL Class](#)

[PAS Dig Lit Tech Highlights](#)

[PAS MUSIC](#)

Parent/Guardian Communication Flow Chart (Draft)



COVID-19 Student Pre-Entry Screener

Parents/Students: All parents/guardians will be required to conduct a daily pre-arrival screening of their children at home, before their children leave for school, which involves taking temperatures daily and monitoring for the symptoms identified below.



Frequent Cough



Shortness of Breath



Sore Throat



Chills



Headache



Muscle Pain



New Loss of Taste or Smell



Fever of 100.4°F or above

1. In the past 24 hours, have you had one of the following symptoms unrelated to a pre-existing medical condition: frequent cough or shortness of breath?
☐ Yes ☐ No
2. In the past 24 hours, have you had TWO of the following symptoms unrelated to a pre-existing medical condition: sore throat, chills, headache, muscle pain, new loss of taste or smell?
☐ Yes ☐ No
3. In the past 24 hours, have you experienced a fever of 100.4°F or above?
☐ Yes ☐ No
4. Have you been in close physical contact with someone who tested positive for COVID-19 within the past 14 days? *Close contact: Within six feet of a Covid positive person for a total of 15 minutes or more over a 24-hour period during the 48 hours before the positive person exhibited symptoms or if asymptomatic, 48 hours before the Covid test was administered.
☐ Yes ☐ No
5. Have you traveled outside of Pennsylvania in the past 10 days?
☐ Yes ☐ No

If any of the responses to the questions above are YES, please do not send your child to school and contact the school nurse for further instructions!

Предварительный осмотр студентов на COVID-19

Родители/учащиеся: Все родители/опекуны должны будут проводить ежедневный предварительный осмотр своих детей дома, прежде чем дети отправятся в школу. Осмотр включает в себя ежедневное измерение температуры и мониторинг симптомов, указанных ниже.



Частый кашель



Одышка



Боль в горле



Озноб



Головная боль



Боли в мышцах



Потеря обоняния и вкуса



Температура 100.4°F и выше

1.

Имелся ли у вас за последние 24 часа один из следующих симптомов, не связанных с ранее существовавшим заболеванием: частый кашель или одышка?

☐ Да

☐ Нет

2.

Были ли у вас за последние 24 часа любые ДВА симптома, не связанные с другим заболеванием: боль в горле, озноб, головная боль, мышечные боли, потеря вкуса или запаха?

☐ Да

☐ Нет

3.

Испытывали ли вы за последние 24 часа лихорадку 100,4 °F или выше?

☐ Да

☐ Нет

4.

Были ли вы в тесном физическом контакте с кем-то, у кого положительный результат теста на COVID-19 в течение последних 14 дней? * Тесный контакт: в пределах шести футов от человека с положительной реакцией на Covid в общей сложности 15 минут или более в течение 24 часов – в течение 48 часов до появления симптомов у человека с положительной реакцией или, если симптомы отсутствуют, 48 часов до проведения теста Covid.

☐ Да

☐ Нет

5.

Вы ездили за пределы Пенсильвании в последние 10 дней?

☐ Да

☐ Нет

Если вы ответили ДА на какой-либо из вопросов, пожалуйста, не отправляйте ребенка в школу и обратитесь к школьной медсестре за инструкциями!



PENN ALEXANDER SCHOOL

Coffee With The Principal

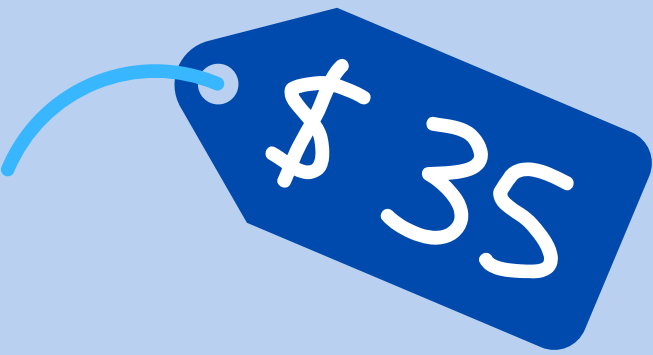
*Friday, April 28
8:45am*

PAS Lunchroom

or

<https://zoom.us/j/9751540779>
Meeting ID: 975 154 0779
Password 820583

Looking forward to seeing you there!



DON'T MISS A SINGLE MOMENT

2 0 2 3 Y E A R B O O K

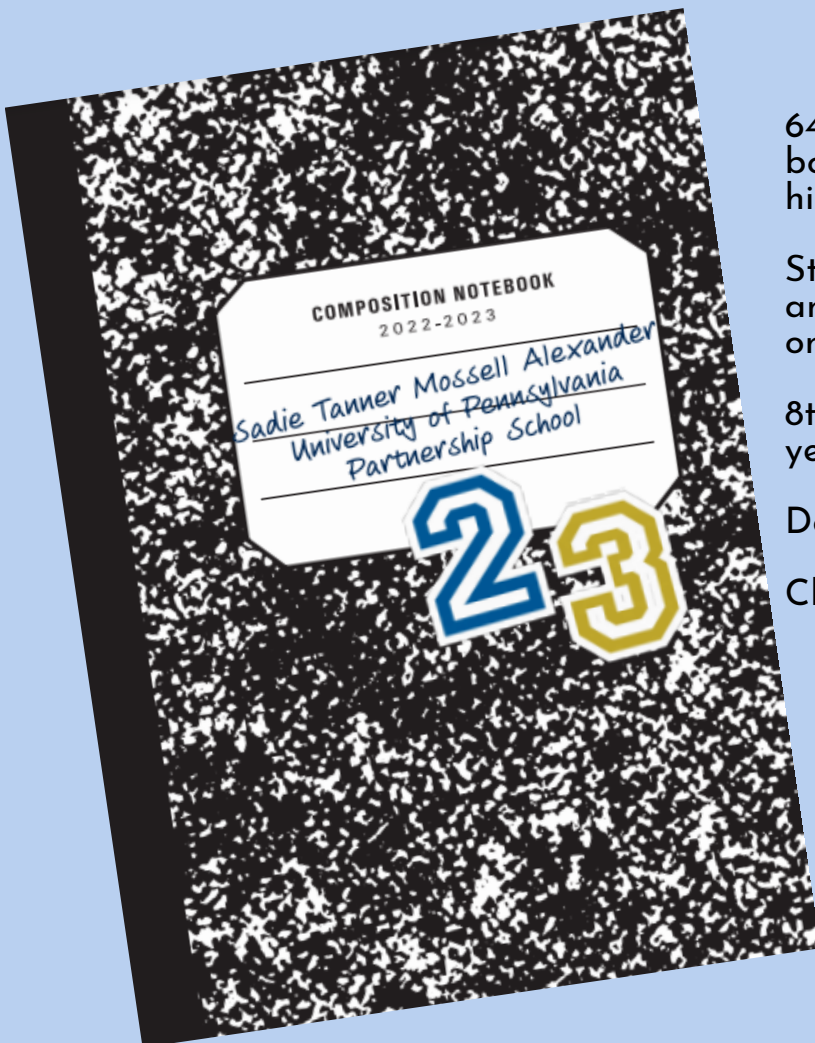
64 full color pages featuring every class - both candids and composites - along with highlights of the year!

Students now, as well as when they are old and gray, will have a good time looking back on all the good times we had this year!

8th graders will receive a complimentary yearbook.

Delivery expected in early June.

Click [HERE](#) to order while supplies last.



<https://www.hsapennalexander.org/form/m/228925>

2023 Penn Alexander Middle School Career Fair

Thursday, June 1st

Session 1: 11:00 am to 12:30 pm

Session 2: 1:30 pm to 3:00 pm

**Are you willing to spend a few hours with our middle school students to
present your profession?**

- **Present to two classes of approximately 25 students**
- **Prepare a 15 to 20-minute presentation on your profession**
- **Answer student questions regarding your line of work**

**If you are interested, please complete this brief [survey](#) to indicate your
availability.**

For additional information, contact Ms. Knight, Counselor at 215-400-7760 and/or tknight@philasd.org.

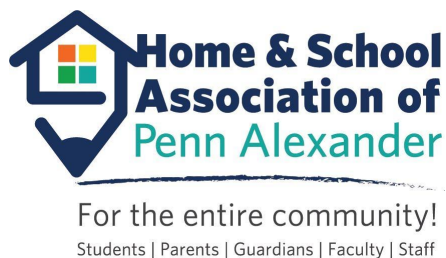
2023 Penn Alexander Career Fair
Thursday, June 1st
11:00 am -12:30 pm
and
1:30 pm to 3:00 pm

**Are you willing to spend an afternoon with our middle school students
presenting your profession?**

- **Present to two classes of around 25 students**
- **Prepare a 15 to 20-minute presentation on your profession**
- **Answer student questions regarding your line of work**

Name	Profession	Preferred Date	Email

For additional information, contact Ms. Knight, Counselor at 215-400-7760.



Home & School Association: Executive Board Elections — nominations due May 13, 2022

Every two years, the parents and guardians of Penn Alexander School elect a new Home & School Association (HSA) Executive Board.

If you are interested in serving on the board of the HSA or if you know someone who would be perfect for one of the jobs, [please nominate yourself or that person](#).

Offices: See the [nomination form](#) for job descriptions/duties.

- **President**
- **Fundraising Chair**
- **Upper School Events Coordinator** (ideally a parent of a 5th- 8th grader at PAS)

Term: The new board will take office on July 1, 2023, and serve a two-year term (for the 2023–2024 and 2024-2025 school years) - until June 30, 2025.

Eligibility: All officers must be the parent/guardian of a child currently enrolled at PAS, and all officers must pass a Pennsylvania Criminal History check and a Pennsylvania Child Abuse History Clearance.

Timeline:

- Nomination forms: Due by **Friday, May 13, 2023**. Fill out this form.
- Info session, meet the Board, Q&A: **Thursday, 5/11 at 7:30- Local 44**
- Elections: **Thursday, 5/18 at 7:30 PM**
- Winner's announcement: **Friday, 5/26 at 8:45 AM** after Coffee with Principal
- June transition for July start

If you have any questions or wish to join the nominating committee, please contact [Nicole Carl](#).

THE WIZARD *of* OZ

YOUTH
EDITION



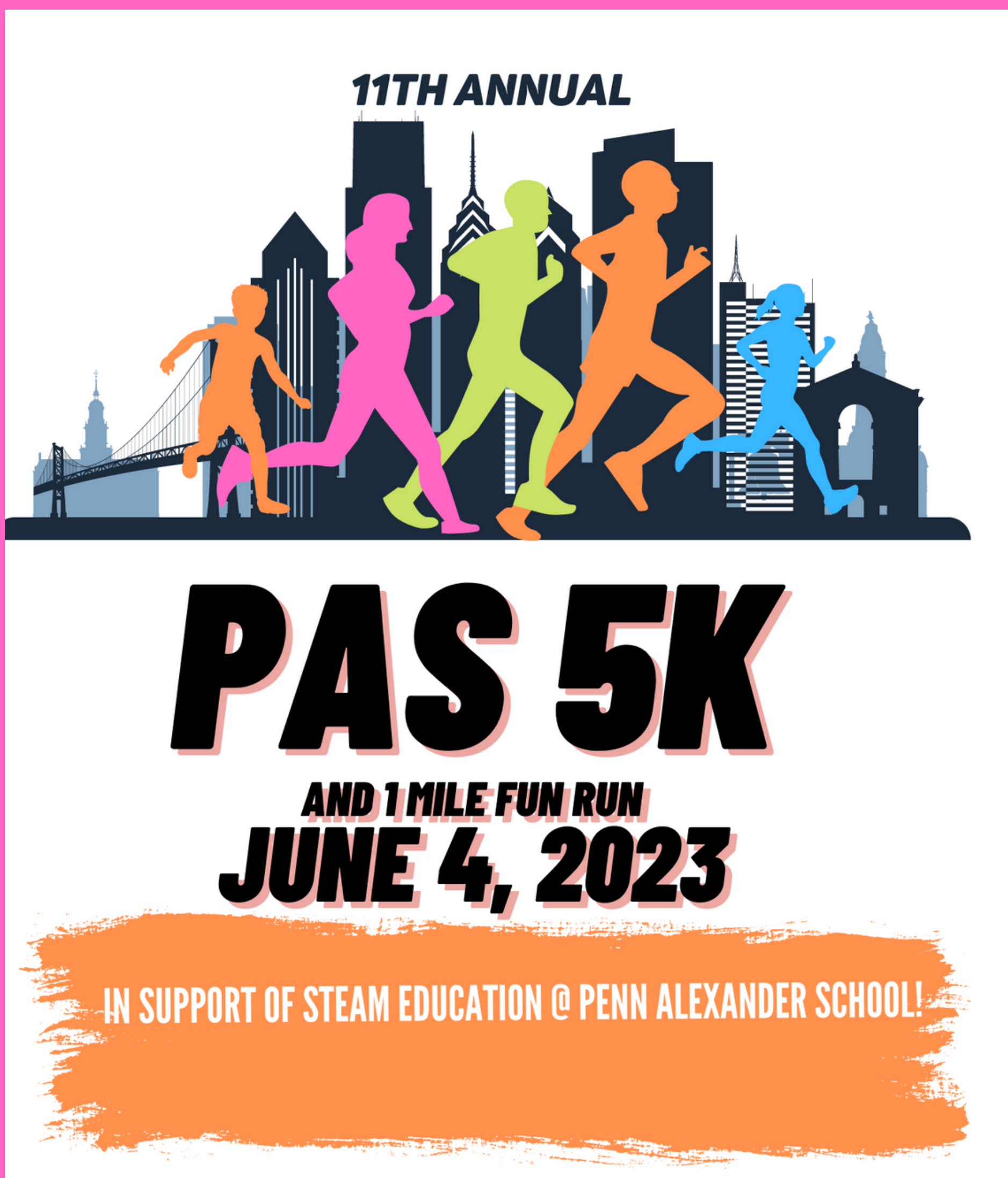
TICKETS
ON SALE
NOW

<https://www.hsapennalexander.org/musical>

PENN ALEXANDER SCHOOL

May 23, 24, 25 at 7p.m.

Cost: \$10



**SIGN UP
TODAY!**

**RUN
WALK
HELP**

Sunday, June 4, 2023


5K: 8:30 AM

1 Mile Fun Run: 9:30 AM

- ***POP PARTY for classes with over 50% registrations***
- ***Register by April 15 to get the best price***
- ***Register by May 8 to get a race shirt***
- ***Registration Insurance available - NEW!***
- ***Pre-Race Outdoor Pasta & Bingo Dinner !***
- ***Student Training Clubs forthcoming!***

Sign up below to RUN, WALK & HELP

<https://www.HSAPennAlexander.org/5K>



ART OF STUDENT TEACHING K-12 ART SHOW

Showcasing a selection of PAS Students
along with hundreds of students from Eastern PA

SUNDAY, APRIL 30
1-3 PM

Tyler School of Art and
Architecture

2001 N 13th Street, Philadelphia, PA 19122

Penn Medicine Nurses Week Community Day

**SATURDAY, MAY 6, 2023
11AM-3PM**

**MALCOLM X PARK
52ND AND PINE STREETS
PHILADELPHIA, PA 19143**

(RAIN DATE: MAY 7, 2023)

Join our 3rd Annual Health Fair

Free

Health Screenings

Heart Disease and Diabetes Education

Facepainting

YMCA Exercise Classes

Primary Care Registration / Info

Cooking Demonstrations

Opioid Overdose Reversal Training

Stop the Bleed Training

Live DJ



Penn Medicine

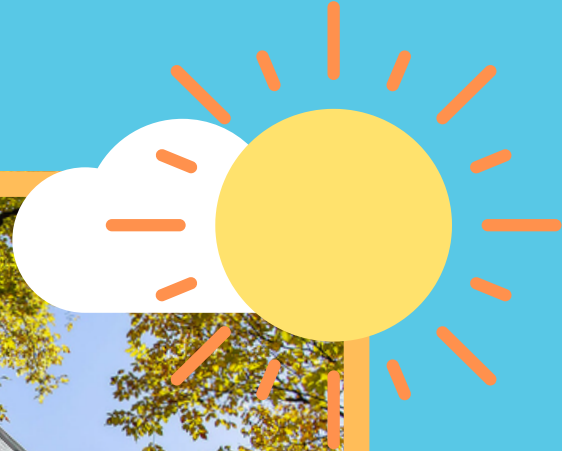


hupfoodpantry@pennmedicine.upenn.edu

CHILD LANGUAGE LAB

SUMMER CAMP

Hosted by the Child
Language Lab at the
University of Pennsylvania!



Inviting rising 7th and 8th graders...
Take part in fun presentations, projects, and trips
and learn all about linguistics and research!

Explore UPenn's great campus!

Learn from Penn's faculty and students!

Free of charge!

Lunch and snacks provided!

Scan to sign-up:



Join us from July 17-21!