

# PAS WEEKLY

[pennalexander.philasd.org](http://pennalexander.philasd.org)

| Ms. Overton, Principal

| 215-400-7760

## Upcoming Events:

### Coffee with the Principal Orientation for Grades 3-5 In- Person Learners

Monday, April 19, 5pm

### Grades 6-8 Re-entry Registration Opens

Tuesday, April 20

### EC Summer Reading Discussion

Tuesday, April 20, 7pm

### GSA

Thursday, April 22, 3:30pm

### Student Grab & Go Meals

Friday, April 23, 9am-2pm

### Student Materials Pickup (100% digital learners)

Friday, April 23,  
8:30am-Noon & 3-6pm

### Grades 6-8 Re-entry Registration Closes

Tuesday, April 27



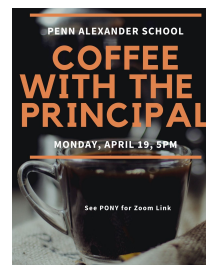
## ReEntry Grades 3-8 & Schedule Updates

**ReEntry Registration for grades 6-8 opens Tuesday, April 20 and closes Tuesday, April 27.** Check your email for your sign up from the School District. If you don't receive a form, you can register by calling the office at 215-400-7760.

**Orientation** for our in-person **grade 3-5** learners will be **Monday, April 19, 5pm** as part of Coffee with the Principal.

## Important Schedule Updates for April 12-26:

- **K-8GR** are to attend their synchronous regularly scheduled specials (art, music, library, gym, tech, K-5 science) **between 4/12-4/23**
- **3-5GR** may be receiving asynchronous work from **12 PM-3:09 4/19-4/23**
- **K-2GR Lunch** will be **11:00-11:45am, starting, April 26**
- **3-5GR Lunch** will be **12:00-12:45pm, starting, April 26**
- **6-8GR Lunch** will be **12:45-1:30pm, starting, April 26**



## Coffee with the Principal: MONDAY, April 19

Please join me on Monday at 5pm at the zoom link below.

<https://us02web.zoom.us/j/9751540779?pwd=Slc5Y2o3T2VuUmRLa01WdExVMzNRQT09>

Meeting ID: 975 154 0779 Passcode: 820583 Mobile: +13017158592

Agenda items will include the [District's announcement](#) of re-entry for K-2 student.

Please use this [form](#) to submit questions or concerns you have about the reopening or other topics you would like to share at this month's session.

**Shout Out to our New Crossing Guards**

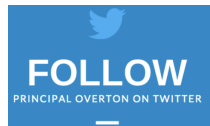
Please join me in welcoming Betty and Alicia to our school community! **Betty** is our new crossing guard at 43rd and Locust Street, and **Alicia** is stationed at 43rd and Spruce. Please stop by to introduce yourself and welcome them to PAS.



**Follow us on Social Media**



[@PENNALEXANDERSCHOOL](#)



[@PAS\\_OVERTON](#)



[@PENNALEXANDER](#)

**Follow PASPress on Instagram**

Follow PASPress on Instagram. Students are invited to click on the bio link to complete a survey on their experience during the pandemic.



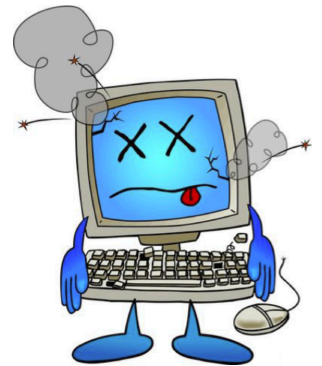
**Moving? Not Returning to PAS for '21-'22?**

Moving? Not returning to PAS for the '21-'22 school year? If you are planning to relocate, or not return to PAS in the Fall, please contact Principal Overton in writing or email ([loverton@philasd.org](mailto:loverton@philasd.org)) as soon as possible. This information will assist us in planning and reorganizing for the upcoming school year. We have a number of students on our waiting list for each grade.



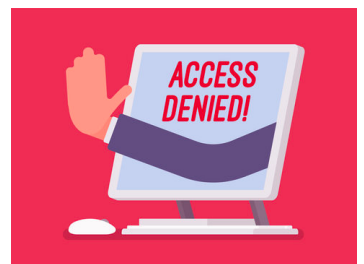
**CHROMEBOOK ISSUES?**

During the first weeks of online learning, we have noticed some students are still having difficulty with the loaned Chromebooks. If you would like assistance, please complete [this form](#).



**Travel Restrictions with School District Student Apps**

As a reminder access to School District services like Google Classroom or Zoom meetings is typically not available from outside the contiguous United States. While you may have an Internet connection through your provider, your student will not be able to access their virtual classroom.



# **ROUND 5 MATERIALS PICKUP**

**1GR - 2GR SCIENCE  
3GR - 4GR MATH & LITERACY  
4GR-5GR CHOIR  
6GR-8GR MUSICAL**

**PAS Blacktop  
Friday, April 23**

**8:30am-12pm: A-L Last Names  
3-6pm: M-Z Last Names**

**Staff will bring packets outside to parent/caregiver. Please bring a piece of paper with your child(ren)'s name & teacher to help staff locate your materials.**

**Please avoid congregating at pick up. Stay home if you have Covid like symptoms or if you have had contact with someone with Covid.**

PENN ALEXANDER SCHOOL

**ROUND 4 MATERIALS PICKUP**  
**&**  
**ROUND 1 MATERIALS RETURN\***

**PAS Blacktop**  
**Thursday, January 28**

**8:30am-12pm: A-L Last Names**

**3-6pm: M-Z Last Names**

**Staff will bring packets outside to parent/caregiver. Please bring a piece of paper with your child(ren)'s name & teacher to help staff locate your materials.**

**Please avoid congregating at pick up. Stay home if you have Covid like symptoms or if you have had contact with someone with Covid.**





# PENN ALEXANDER SCHOOL

PRESENTS ...

# TALENT SHOW 2021!!!

*A Virtual Evening*

*Friday, May 14, 2021*

*6:30 pm*

*Come and see your classmates!!*

## Tickets

- Register [here](#) for tickets! You will receive a link to the show after registering.
  - Suggested contribution 15\$ per household
  - Pay what you wish, or not at all

## Show Details




- The show will provide an entire evening's entertainment!
- Feel free to join us over dinner and stay all evening
  - You will also be able to stop the event at any time and watch the remainder another time.
  - Not free on May 14? No problem! You can watch the show at a time that works for you.
- Prepare to be AMAZED at the diverse show of talent from our PAS students!!

## Sponsorship (details on following page)

- Want to show support for a student or students? Consider purchasing a Family Call Out in the program!
- Want to support a local business? Consider purchasing an advertisement to support them!

Questions? Contact your planning committee:

Michelle Bloodwell ([mgoeke@gmail.com](mailto:mgoeke@gmail.com)), Angela Curry ([akweon@hotmail.com](mailto:akweon@hotmail.com)),  
Chrissie Hill-Kayser ([hill.kayser@gmail.com](mailto:hill.kayser@gmail.com)), Dave Stotz ([dstotz@constitutioncenter.org](mailto:dstotz@constitutioncenter.org)),  
Carrie Waterman ([carrie.waterman@compass.com](mailto:carrie.waterman@compass.com))



Penn Alexander School  
4209 Spruce St., Phila., PA 19104  
(215) 400-7760

TALENT SHOW  
MAY 14, 2021  
Virtual Showtime - 6:30pm

# PENN ALEXANDER SCHOOL

## SPONSORSHIP FORM

# TALENT SHOW 2021!!!

**CALL FOR SPONSORS**  
To Support the Penn Alexander School  
The PAS HSA is a registered 501(c)(3). EIN is 11-3707471



### Sponsored Tiers

**\$10 for student / family shout out in program**

**\$20 for company name in program**

**\$35 for company name at end of the show + in program**

**\$50 for slide during show**

Sign up [HERE](#)  
by April 25th

OR please return this form:

Sponsorship Contact \_\_\_\_\_

PAS Student / Family Shout Out \_\_\_\_\_

\_\_\_\_\_

Company \_\_\_\_\_

Address \_\_\_\_\_

Phone \_\_\_\_\_

Sponsorship Amount \$ \_\_\_\_\_

PAS HSA  
4209 Spruce St.  
Phila., PA 19104

Attn PAS HSA  
Fax (215) 400-7761

Enclose check payable to **PAS HSA**  
PayPal to [hsatreasurerpas@gmail.com](mailto:hsatreasurerpas@gmail.com)  
Venmo @PennAlexanderHSA



**THANK YOU FOR HELPING SUPPORT OUR SCHOOL!!!**

Follow PAS on Instagram @pennalexanderschool



**SUPPORT THE ASIAN AMERICAN PACIFIC ISLANDER  
COMMUNITY WITH YOUR DONATIONS  
TO PURCHASE BOOKS FOR THE PAS CLASSROOMS**

**HELP US REACH OUR GOAL OF 100 BOOKS!  
WE ARE \$600 AWAY FROM PURCHASING  
SOME OF THESE GREAT SELECTIONS FOR  
OUR STUDENTS.**



**DONATIONS CAN BE MADE THROUGH**

- VENMO @PENNALEXANDERHSA (Note "AAPI Book Donations")
- CASH or CHECK Payable to PAS HSA may be dropped off to Angela Curry at 219 St. Marks Square (Note "AAPI Book Donations")

SPRING FORWARD  
PENN ALEXANDER'S FIRST  
NATIVE PLANT SALE!



ONLINE SALES SOON!  
PLANT PICK UP: MAY 9 @ PAS  
Butterfly on Joe Pye by Jill Shashaty

Plant Native Plants to Beautify and Support our Environment!

- Native plants are the foundation of the food web. All of the animals in our ecosystem are connected to food sources supported by natives.
- Insects and birds in our ecosystem depend on them for survival.
- Native plants evolved in this region and are well suited to its climate and soils. Native plants are thus hardier and use less water than nonnatives.
- Native plants offer beauty and a sense of place to our gardens by blooming through three seasons and dazzling us with colors, shapes, and patterns unique to our region.
- Native plants fight climate change, preserve biodiversity, support pollinators, manage stormwater, and provide wildlife habitat.

THE PAS EQUITY CIRCLE INVITES YOU TO JOIN US FOR A



# Summer Reading Discussion

Thursday, April 8, 2021  
7-8:30 PM

or

Tuesday, April 20, 2021  
7-8:30 PM

## Readings that will be part of the discussion:

1619: The Idea of America

1619: Mass Incarceration

Other topics to cover: Talking to Children about Race

Reading Link:

<https://tinyurl.com/PASSummerReading2020>

Zoom Link:

<https://tinyurl.com/SummerReadingDiscussion>

Meeting ID: 898 5143 5625, Passcode: 924885



Please RSVP Here:

<https://tinyurl.com/SummerReadingSignUp20-21>



THE SCHOOL DISTRICT OF PHILADELPHIA'S

# SUMMER PROGRAM

June 28th to July 30th

**ELEMENTARY (K-7TH): [REGISTER HERE](#)**  
**SECONDARY (8-12TH): [REGISTER HERE](#)**

**IN-PERSON** instructional programming will be offered Monday - Friday from 8:30 a.m.- 4 p.m. Extracurricular activities, art, and athletics will be offered daily by the City of Philadelphia.

For more information, click [here](#).

Placement is accepted on a first-come, first-served basis.

Families are **encouraged to sign up by 4/30/21**, although registration officially closes 5/15/21.

## Information Session Links

[Monday 4/19 @ 10am](#)

[Monday 4/19 @ 6pm](#)

[Wednesday 4/28 @10am](#)

[Wednesday 4/28 @ 6pm](#)

[\*Interpretation Sign Up\*](#)

## Translated Flyers

[عربي](#)

[中国人](#)

[Français](#)

[Русский](#)

[Español](#)



PHILADELPHIA  
BAR ASSOCIATION

## ***LAW WEEK 2021 POSTER CONTEST***

What does advancing “the rule of law” mean to you?

4<sup>th</sup>, 5<sup>th</sup> and 6<sup>th</sup> grade students from Philadelphia public, private, parochial and charter elementary schools are invited to create a poster depicting the 2021 Law Week poster theme stated above.

**PRIZES are Gift Cards:**  
**First: \$125 | Second: \$50 | Third: \$25**

Entries must be received by **Friday, April 30, 2021** at 5:00 p.m.

Posters should be produced on standard poster board. Photographs of the poster should be submitted via email to Dawn Petit at [dpetit@philabar.org](mailto:dpetit@philabar.org) with the subject line “Poster Contest.” Include your name, address, telephone number and school in the email.

**SPONSORED BY:**  
***Philadelphia Bar Association’s Young Lawyers Division***

All posters become property of the Philadelphia Bar Association once received.

## MONDAY

## TUESDAY

## WEDNESDAY

## THURSDAY

## FRIDAY

1

2

*\*All Menus Are Subject to Change\**



5

6

7

8

9

- Entrée**
- Cheerios Cereal
  - Graham Crackers
- Fruit Selection**
- Applesauce Cup
  - Grape Juice

- Entrée**
- WG Chicken Patty on Biscuit
- Fruit Selection**
- Pear Cup
  - Orange Tangerine Juice



- Entrée**
- Beef Sausage Slider
- Fruit Selection**
- Pear Cup
  - Orange Tangerine Juice

- Entrée**
- Double Chocolate Mini Muffin
- Fruit Selection**
- Peach Cup
  - Apple Juice

12

13

14

15

16

- Entrée**
- Beef Sausage Slider
- Fruit Selection**
- Mixed Fruit Cup
  - Fruit Punch

- Entrée**
- Double Chocolate Mini Muffin
- Fruit Selection**
- Peach Cup
  - Apple Juice



- Entrée**
- Cheerios Cereal
  - Graham Crackers
- Fruit Selection**
- Applesauce Cup
  - Grape Juice

- Entrée**
- WG Chicken Patty on Biscuit
- Fruit Selection**
- Mixed Fruit Cup
  - Fruit Punch

19

20

21

22

23

- Entrée**
- Cheerios Cereal
  - Graham Crackers
- Fruit Selection**
- Applesauce Cup
  - Grape Juice

- Entrée**
- WG Chicken Patty on Biscuit
- Fruit Selection**
- Pear Cup
  - Orange Tangerine Juice



- Entrée**
- Beef Sausage Slider
- Fruit Selection**
- Pear Cup
  - Orange Tangerine Juice

- Entrée**
- Double Chocolate Mini Muffin
- Fruit Selection**
- Peach Cup
  - Apple Juice

26

27

28

29

30

- Entrée**
- Beef Sausage Slider
- Fruit Selection**
- Mixed Fruit Cup
  - Fruit Punch

- Entrée**
- Double Chocolate Mini Muffin
- Fruit Selection**
- Peach Cup
  - Apple Juice



- Entrée**
- Cheerios Cereal
  - Graham Crackers
- Fruit Selection**
- Applesauce Cup
  - Grape Juice

- Entrée**
- WG Chicken Patty on Biscuit
- Fruit Selection**
- Mixed Fruit Cup
  - Fruit Punch

Daily Milk Variety: 1% White Milk, FF Chocolate Milk, Lactose Free Milk

This institution is an equal opportunity provider. Layout & Design © Nutrislice, Inc. Printed on 3/23/2021 at 2:54 pm .



## MONDAY

## TUESDAY

## WEDNESDAY

## THURSDAY

## FRIDAY

1

2

*\*All Menus Are Subject to Change\**



5

6

7

8

9

- Entrée
- Sunbutter
  - Jelly Packet
  - WG Crackers
- Vegetable & Fruit Selections
- Cherry Craisins
  - 100% Vegetable Juice

- Entrée
- Cheese Pizza
- Vegetable & Fruit Selections
- Broccoli
  - Peach Cup



- Entrée
- Chicken Tenders
  - BBQ Sauce Packet
- Vegetable & Fruit Selections
- Broccoli
  - Peach Cup

- Entrée
- Turkey Tacos
  - Tostitos Rounds
- Vegetable & Fruit Selections
- Corn
  - Mixed Fruit Cup

12

13

14

15

16

- Entrée
- Chicken Tenders
  - BBQ Sauce Packet
- Vegetable & Fruit Selections
- Broccoli
  - Applesauce Cup

- Entrée
- Turkey Tacos
  - Tostitos Rounds
- Vegetable & Fruit Selections
- Corn
  - Mixed Fruit Cup



- Entrée
- WG Chicken Patty Sandwich
  - BBQ Sauce Packet
  - Ketchup
- Vegetable & Fruit Selections
- Potato Rounds
  - Pear Cup

- Entrée
- Cheese Pizza
- Vegetable & Fruit Selections
- Broccoli
  - Applesauce Cup

19

20

21

22

23

- Entrée
- WG Chicken Patty Sandwich
  - BBQ Sauce Packet
  - Ketchup
- Vegetable & Fruit Selections
- Potato Rounds
  - Pear Cup

- Entrée
- Cheese Pizza
- Vegetable & Fruit Selections
- Broccoli
  - Peach Cup



- Entrée
- Chicken Tenders
  - BBQ Sauce Packet
- Vegetable & Fruit Selections
- Broccoli
  - Peach Cup

- Entrée
- Turkey Tacos
  - Tostitos Rounds
- Vegetable & Fruit Selections
- Corn
  - Mixed Fruit Cup

26

27

28

29

30

- Entrée
- Chicken Tenders
  - BBQ Sauce Packet
- Vegetable & Fruit Selections
- Broccoli
  - Applesauce Cup

- Entrée
- Turkey Tacos
  - Tostitos Rounds
- Vegetable & Fruit Selections
- Corn
  - Mixed Fruit Cup



- Entrée
- WG Chicken Patty Sandwich
  - BBQ Sauce Packet
  - Ketchup
- Vegetable & Fruit Selections
- Potato Rounds
  - Pear Cup

- Entrée
- Cheese Pizza
- Vegetable & Fruit Selections
- Broccoli
  - Applesauce Cup

Daily Milk Variety: 1% White Milk, FF Chocolate Milk, Lactose Free Milk

This institution is an equal opportunity provider. Layout & Design © Nutrislice, Inc.



[Live Like Blaine](#) has two opportunities for female athletes!  
Please share with anyone who might be interested!

Camp scholarships: Open to 7th - 12th grade female athletes for the  
[Julie Foudy](#) Sports Leadership Academy.

To apply and learn more:

<https://livelikeblaine.org/our.../our-programs-summer/>

LLB Leadership Academy for 2021-2022 school year open to all current  
freshman female athletes in the Philadelphia area.

<https://livelikeblaine.org/our.../leadershipacademy/>





TRAPEZIUM MATH®  
Club

# Prevent the Summer Slide!

Trapezium Math has created a 7-week, highly engaging Summer Math Club for children in grades k-5. Your child will participate in out-of-your-seat math games and activities that reinforce and build their math skills and confidence.

## Trapezium Math Club Sessions:

- Meet for 1 hour, once per week for 7 weeks
- Choose a Day & Time:  
**M, T, W, Th - 10am or 5pm EST or Sat & Sun - 10am or 1pm EST**
- Have only 4 children per club
- Are virtual and can be done anywhere
- Are as "technology-free" as you can get with virtual learning  
*(all your child needs is a ZOOM Link and our Clubhouse Kit)*
- Are focused on maintaining and building strong math skills in children grades k-5
- Are designed to build confident & fearless math learners regardless of your child's starting point

## Want to learn more?

Click here to sign up for a Virtual Town Hall  
April 20th, 24th, 27th or May 1st

Click here to learn about Summer  
Scholarships for Philadelphia Students

1-833-TRPZIUM / 1 (833-877-9486)

[www.trapeziummath.com](http://www.trapeziummath.com)



trapezium\_math\_club



Trapezium Math

