

PAS WEEKLY

pennalexander.philasd.org | Ms. Overton, Principal | 215-400-7760

Upcoming Events:

School Advisory Council (SAC)

Monday, April 12, 3:45pm

Grades 3-5 Reentry Registration Closes

Tuesday, April 13

GSA

Thursday, April 15, 3:30pm

Student Grab & Go Meals

Friday, April 16, 9am-2pm

EC Summer Reading Discussion

Thursday, April 20, 7pm

Student Materials Pickup (100% digital learners)

Friday, April 23,
8:30am-Noon & 3-6pm



ReEntry Grades 3-5 & Schedule Updates

Re-Entry Registration for grades 3-5 will close on **Tuesday, April 13th**. If you did not receive the sign up form and you would like to opt-in your child, please call the office at 215-400-7760 or email me at loverton@philasd.org. Students will attend school in person two days per week (M/T OR Th/F) and engage in digital learning three days each week, beginning the week of **Monday, April 26, 2021**.

Our apologies for the the untimeliness of this notice but we continue to receive new information from the district regarding this week's return of grades 3-8 teachers to the building. **Many of these updates impact schedules. I am posting them again as a reminder to students and families.** Thank you in advance for your continued understanding.

Important Schedule Updates for April 12-26:

- **K-8GR** are to attend their synchronous regularly scheduled specials (art, music, library, gym, tech, K-5 science) **between 4/12-4/23**
- **3-5GR** will be asynchronous on Monday, **4/12**
- **3-5GR** may be receiving asynchronous work from **12 PM-3:09 4/13-4/23**
- **5-8GR** should log on at **9:05am, Monday, 4/12** (teacher training 8:30am-9:00am)
- **6-8GR** will have asynchronous work, **12 PM-3:09, Thursday, 4/15** (teacher training on setting up the new technology in their classroom)
- **K-2GR Lunch** will be **11:00-11:45am, starting, April 26**
- **3-5GR Lunch** will be **12:00-12:45pm, starting, April 26**

Follow us on Social Media



[@PENNALEXANDERSCHOOL](https://www.facebook.com/PennAlexanderSchool)



[@PAS_OVERTON](https://twitter.com/PAS_OVERTON)



[@PENNALEXANDER](https://www.instagram.com/PennAlexander)

COVID-19 P-EBT Card - Student Address Verification

Please check your email for a message from the School District (sender is "portal-notification@philasd.org") confirming your mailing address for the P-EBT card that will be issued in early May to compensate all district families for not having access to free or reduced-price school meals while schools were closed.

If you did not receive the email and you want to confirm your address, log into the parent or student portal, click on More, click on Address information. If your address is not correct, please email two current proofs of address to the PAS school secretary at abullock@philasd.org.

Deadline to submit a Address Update Request is Friday, April 16, 2021.

For more information about this program, including the benefit amount, visit: philasd.org/studentplacement/pebt or call 215-400-5300.

To make sure you received District emails, turn on email contact preference in the parent portal by clicking on the person icon in the upper right corner



2021-22 Student Placement Requests

As we approach the spring season our teachers and staff will begin reflecting on our current programs and models to begin the planning process for the 2021-22 school year. During the planning process, we will spend significant time discussing student growth and needs to ensure classroom placements for the upcoming school year are purposeful. In both assigning individual students to classes and creating groups, there are many factors we must keep in mind. We will consider each student's placement to ensure needs are met.

I will work with individual grade teams as well as our student support staff to keep all aspects of your child in mind as we assign a cohort of students and teacher to each classroom. We do not take this task lightly. Due to the work that is required during this process, and complex nature of the task, I respectfully ask that you do not request a specific teacher for your child.

If there are extenuating circumstances that you do not believe we are aware of, feel free to communicate this information in writing to me prior to the beginning of Spring Break, April 9, 2021.

I assure you that your child's best interests are at the forefront of our planning and decision making. As usual, families will be notified of their classroom placements on the final report card which is distributed on the last day of school. Thank you for your cooperation.



Follow PASPress on Instagram

Follow PASPress on Instagram. Students are invited to click on the bio link to complete a survey on their experience during the pandemic.



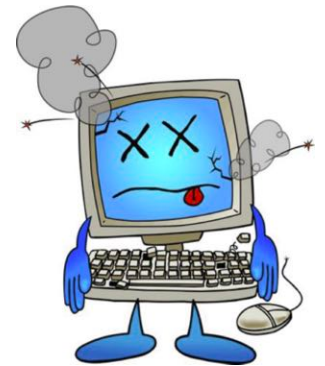
Moving? Not Returning to PAS for '21-'22?

Moving? Not returning to PAS for the '21-'22 school year? If you are planning to relocate, or not return to PAS in the Fall, please contact Principal Overton in writing or email (loverton@philasd.org) as soon as possible. This information will assist us in planning and reorganizing for the upcoming school year. We have a number of students on our waiting list for each grade.



CHROMEBOOK ISSUES?

During the first weeks of online learning, we have noticed some students are still having difficulty with the loaned Chromebooks. If you would like assistance, please complete [this form](#).



Travel Restrictions with School District Student Apps

As a reminder access to School District services like Google Classroom or Zoom meetings is typically not available from outside the contiguous United States. While you may have an Internet connection through your provider, your student will not be able to access their virtual classroom.





AAPI HERITAGE MONTH : BOOK DONATIONS TO PAS

Dear friends,

Greetings! We are a group of Asian-American families at Penn Alexander. In celebration of May as Asian American and Pacific Islander Heritage Month, and in light of recent events, we would like to donate books on Asian-American history, experiences, and identity to PAS. We would like our teachers and students to have easy access to such resources, which not only show that Asian-American cultural, artistic, and political traditions are, but also inseparable from the broader American story. We believe this is important in opening up and maintaining dialogues of diversity and inclusion, which are crucial for our school to remain the safe, happy, and educational place that our children need.

We would like your help! There are several ways that you can support this project.

1. DONATIONS. All donations will be used to purchase books. You can make a donation via Venmo - @PennAlexanderHSA (Must note that the donation is for "AAPI Book Donations")

Cash or Checks - Payable to the PAS HSA may be dropped off to Angela Curry at 219 St. Marks Square (across the street from the playground) with the note that it is a donation for "AAPI Book Donations"

2. BOOK RECOMMENDATIONS. If you know of books that fall under the theme of Asian-American experiences please contact PAS parent Xiao Dong (dongxiaoclaire0108@gmail.com).

3. PROMOTE THIS PROJECT. Let more people know about our project.

If you have any questions please do not hesitate to contact the project coordinators:
Fangyuan (sufangyuan2008@gmail.com)
Lilly Kosaka (lillywingyen@hotmail.com)

THANK YOU FOR ALL YOUR HELP AND SUPPORT.

JOIN US AT OUR SAC MEETING!

Penn Alexander School Advisory Council (SAC)

Monday, April 12, 2021, 3:45-4:45PM

Zoom Link:

<https://us02web.zoom.us/j/9751540779?pwd=Slc5Y2o3T2VuUmRLa01WdExVMzNRQT09>

Meeting ID: 975 154 0779 Passcode: 820583

One tap mobile +13017158592

The Penn Alexander School Advisory Council (SAC) is comprised of peer-elected stakeholders including parents, staff and community members. The SAC is a forum for discussion and collaboration with the PAS administration on school-based decision making with a focus on student achievement and school improvement.

COME SHARE YOUR VOICE!

The SAC meetings are public meetings that are open to all families and community members. The first thirty minutes of each meeting is reserved for family or community members to address the SAC in a public forum, each speaker will be given three minutes to speak. If you wish to speak at a SAC meeting, please email SAC Chairperson, Jessica McCollum at tjmccollum@gmail.com by 3:45PM on the day before the meeting. If you are not able to attend, you can submit a public testimony that will be shared with all SAC members.

To learn more about Penn Alexander's SAC and review a list of SAC members, please visit our SAC website-pennalexander.philasd.org/school-advisory-council/

April 2021 SAC Tentative Meeting Agenda

April 12, 2021, 3:45-4:45PM

	Agenda Item	Time Estimate
1	Open Forum - Reopening	25 minutes
2	Approval of March 2021 Meeting Minutes	5 minutes
3	Principal Report	15 minutes
4	Future SAC Meeting Dates: - Monday, May 10th, 3:45pm - 4:45pm	5 minutes

THE PAS EQUITY CIRCLE INVITES YOU TO JOIN US FOR A



Summer Reading Discussion

Thursday, April 8, 2021
7-8:30 PM

or

Tuesday, April 20, 2021
7-8:30 PM

Readings that will be part of the discussion:

1619: The Idea of America

1619: Mass Incarceration

Other topics to cover: Talking to Children about Race

Reading Link:

<https://tinyurl.com/PASSummerReading2020>

Zoom Link:

<https://tinyurl.com/SummerReadingDiscussion>

Meeting ID: 898 5143 5625, Passcode: 924885



Please RSVP Here:

<https://tinyurl.com/SummerReadingSignUp20-21>



Penn Alexander School
4209 Spruce St., Phila., PA 19104
(215) 400-7760

TALENT SHOW
MAY 14, 2021
Virtual Showtime - 6:30pm

PENN ALEXANDER SCHOOL

SPONSORSHIP FORM

TALENT SHOW 2021!!!

CALL FOR SPONSORS
To Support the Penn Alexander School
The PAS HSA is a registered 501(c)(3). EIN is 11-3707471



Sponsored Tiers

\$10 for student / family shout out in program

\$20 for company name in program

\$35 for company name at end of the show + in program

\$50 for slide during show

Sign up [HERE](#)
by April 25th

OR please return this form:

Sponsorship Contact _____

PAS Student / Family Shout Out _____

Company _____

Address _____

Phone _____

Sponsorship Amount \$ _____

PAS HSA
4209 Spruce St.
Phila., PA 19104

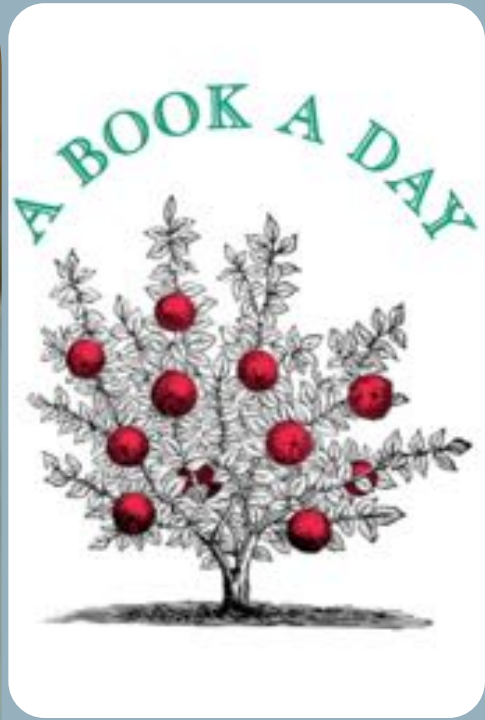
Attn PAS HSA
Fax (215) 400-7761

Enclose check payable to **PAS HSA**
PayPal to hsatreasurerpas@gmail.com
Venmo @PennAlexanderHSA



THANK YOU FOR HELPING SUPPORT OUR SCHOOL!!!

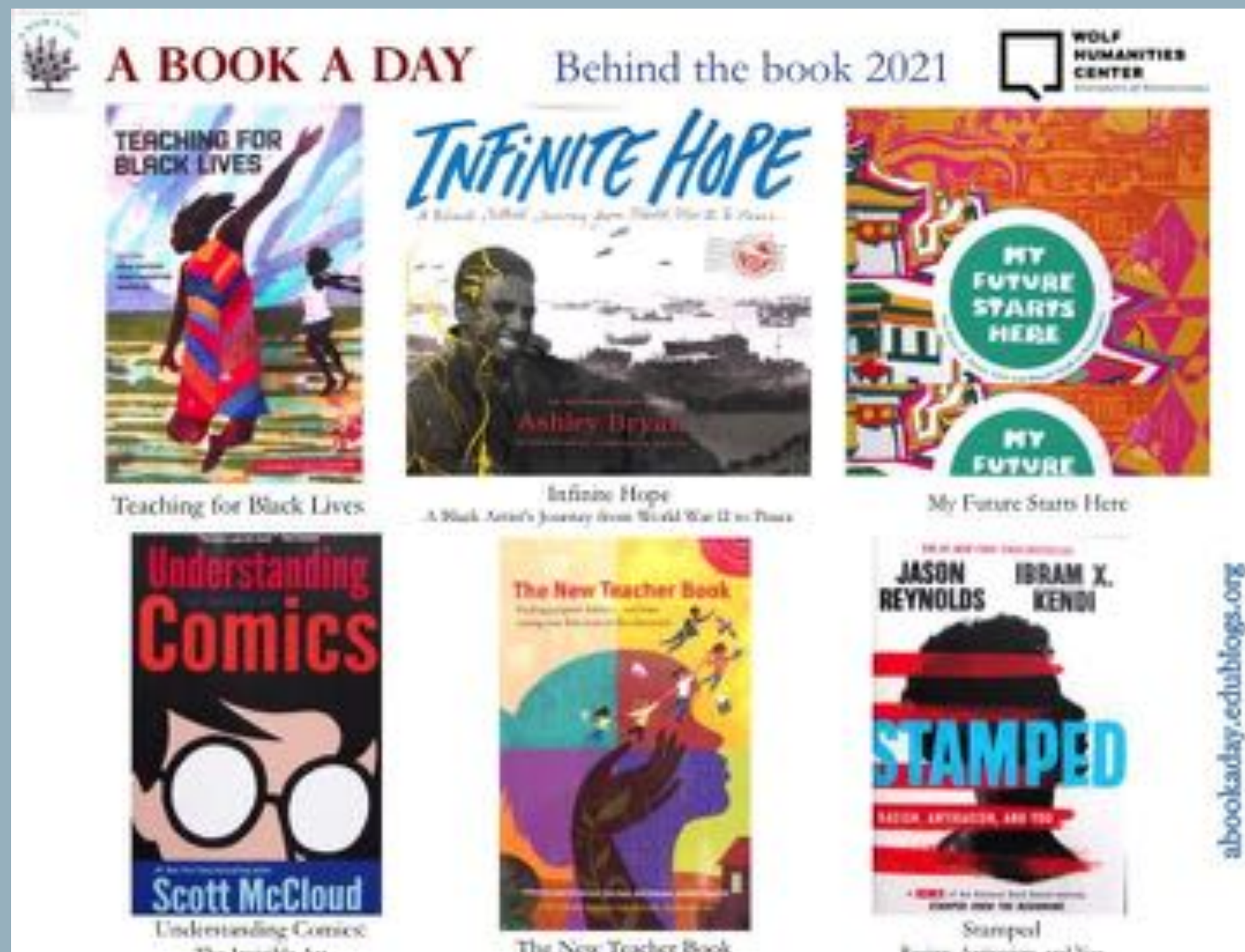
Follow PAS on Instagram @pennalexanderschool



A Book A Day

Our second round of featured books in partnership with the [Wolf Humanities Center](#) at Penn, bringing book selections to our community teachers! These titles are donated to the libraries of the Henry C. Lea School and the Penn Alexander School in West Philadelphia to be used by both students and educators. Books are available at [Bindlestiff Books](#) and will be eagerly awaiting check out from our partnering school libraries when it is safe to resume book circulation :)

Thank you to the Wolf Humanities Center for your generous support!
Happy reading ahead!



Donated Books



To discover more
books and programs,
see our Newsletter



PHILADELPHIA
BAR ASSOCIATION

LAW WEEK 2021 POSTER CONTEST

What does advancing “the rule of law” mean to you?

4th, 5th and 6th grade students from Philadelphia public, private, parochial and charter elementary schools are invited to create a poster depicting the 2021 Law Week poster theme stated above.

PRIZES are Gift Cards:
First: \$125 | Second: \$50 | Third: \$25

Entries must be received by **Friday, April 30, 2021** at 5:00 p.m.

Posters should be produced on standard poster board. Photographs of the poster should be submitted via email to Dawn Petit at dpetit@philabar.org with the subject line “Poster Contest.” Include your name, address, telephone number and school in the email.

SPONSORED BY:
Philadelphia Bar Association’s Young Lawyers Division

All posters become property of the Philadelphia Bar Association once received.

MONDAY

TUESDAY

WEDNESDAY

THURSDAY

FRIDAY

1

2

All Menus Are Subject to Change



5

6

7

8

9

- Entrée**
- Cheerios Cereal
 - Graham Crackers
- Fruit Selection**
- Applesauce Cup
 - Grape Juice

- Entrée**
- WG Chicken Patty on Biscuit
- Fruit Selection**
- Pear Cup
 - Orange Tangerine Juice



- Entrée**
- Beef Sausage Slider
- Fruit Selection**
- Pear Cup
 - Orange Tangerine Juice

- Entrée**
- Double Chocolate Mini Muffin
- Fruit Selection**
- Peach Cup
 - Apple Juice

12

13

14

15

16

- Entrée**
- Beef Sausage Slider
- Fruit Selection**
- Mixed Fruit Cup
 - Fruit Punch

- Entrée**
- Double Chocolate Mini Muffin
- Fruit Selection**
- Peach Cup
 - Apple Juice



- Entrée**
- Cheerios Cereal
 - Graham Crackers
- Fruit Selection**
- Applesauce Cup
 - Grape Juice

- Entrée**
- WG Chicken Patty on Biscuit
- Fruit Selection**
- Mixed Fruit Cup
 - Fruit Punch

19

20

21

22

23

- Entrée**
- Cheerios Cereal
 - Graham Crackers
- Fruit Selection**
- Applesauce Cup
 - Grape Juice

- Entrée**
- WG Chicken Patty on Biscuit
- Fruit Selection**
- Pear Cup
 - Orange Tangerine Juice



- Entrée**
- Beef Sausage Slider
- Fruit Selection**
- Pear Cup
 - Orange Tangerine Juice

- Entrée**
- Double Chocolate Mini Muffin
- Fruit Selection**
- Peach Cup
 - Apple Juice

26

27

28

29

30

- Entrée**
- Beef Sausage Slider
- Fruit Selection**
- Mixed Fruit Cup
 - Fruit Punch

- Entrée**
- Double Chocolate Mini Muffin
- Fruit Selection**
- Peach Cup
 - Apple Juice



- Entrée**
- Cheerios Cereal
 - Graham Crackers
- Fruit Selection**
- Applesauce Cup
 - Grape Juice

- Entrée**
- WG Chicken Patty on Biscuit
- Fruit Selection**
- Mixed Fruit Cup
 - Fruit Punch

Daily Milk Variety: 1% White Milk, FF Chocolate Milk, Lactose Free Milk

This institution is an equal opportunity provider. Layout & Design © Nutrislice, Inc. Printed on 3/23/2021 at 2:54 pm .



MONDAY

TUESDAY

WEDNESDAY

THURSDAY

FRIDAY

1

2

All Menus Are Subject to Change



5

6

7

8

9

- Entrée
- Sunbutter
 - Jelly Packet
 - WG Crackers
- Vegetable & Fruit Selections
- Cherry Craisins
 - 100% Vegetable Juice

- Entrée
- Cheese Pizza
- Vegetable & Fruit Selections
- Broccoli
 - Peach Cup



- Entrée
- Chicken Tenders
 - BBQ Sauce Packet
- Vegetable & Fruit Selections
- Broccoli
 - Peach Cup

- Entrée
- Turkey Tacos
 - Tostitos Rounds
- Vegetable & Fruit Selections
- Corn
 - Mixed Fruit Cup

12

13

14

15

16

- Entrée
- Chicken Tenders
 - BBQ Sauce Packet
- Vegetable & Fruit Selections
- Broccoli
 - Applesauce Cup

- Entrée
- Turkey Tacos
 - Tostitos Rounds
- Vegetable & Fruit Selections
- Corn
 - Mixed Fruit Cup



- Entrée
- WG Chicken Patty Sandwich
 - BBQ Sauce Packet
 - Ketchup
- Vegetable & Fruit Selections
- Potato Rounds
 - Pear Cup

- Entrée
- Cheese Pizza
- Vegetable & Fruit Selections
- Broccoli
 - Applesauce Cup

19

20

21

22

23

- Entrée
- WG Chicken Patty Sandwich
 - BBQ Sauce Packet
 - Ketchup
- Vegetable & Fruit Selections
- Potato Rounds
 - Pear Cup

- Entrée
- Cheese Pizza
- Vegetable & Fruit Selections
- Broccoli
 - Peach Cup



- Entrée
- Chicken Tenders
 - BBQ Sauce Packet
- Vegetable & Fruit Selections
- Broccoli
 - Peach Cup

- Entrée
- Turkey Tacos
 - Tostitos Rounds
- Vegetable & Fruit Selections
- Corn
 - Mixed Fruit Cup

26

27

28

29

30

- Entrée
- Chicken Tenders
 - BBQ Sauce Packet
- Vegetable & Fruit Selections
- Broccoli
 - Applesauce Cup

- Entrée
- Turkey Tacos
 - Tostitos Rounds
- Vegetable & Fruit Selections
- Corn
 - Mixed Fruit Cup



- Entrée
- WG Chicken Patty Sandwich
 - BBQ Sauce Packet
 - Ketchup
- Vegetable & Fruit Selections
- Potato Rounds
 - Pear Cup

- Entrée
- Cheese Pizza
- Vegetable & Fruit Selections
- Broccoli
 - Applesauce Cup

Daily Milk Variety: 1% White Milk, FF Chocolate Milk, Lactose Free Milk

This institution is an equal opportunity provider. Layout & Design © Nutrislice, Inc.



[Live Like Blaine](#) has two opportunities for female athletes!
Please share with anyone who might be interested!

Camp scholarships: Open to 7th - 12th grade female athletes for the
[Julie Foudy](#) Sports Leadership Academy.

To apply and learn more:

<https://livelikeblaine.org/our.../our-programs-summer/>

LLB Leadership Academy for 2021-2022 school year open to all current
freshman female athletes in the Philadelphia area.

<https://livelikeblaine.org/our.../leadershipacademy/>

Girl Scouts is launching the “Becoming Me” program in collaboration with Former First Lady Michelle Obama and Penguin Random House!

Inspired by themes from Mrs. Obama’s *Becoming: Adapted for Young Readers*, Girl Scouts’ new Becoming Me program aims to help girls become their best selves. Check out our story on Parents.com or visit www.girlscouts.org/becomingme to learn more.

I am reaching out to invite your school to share this incredible opportunity with the girls and families you serve. In the coming weeks, we will also be seeking adults to volunteer in facilitating the 6-8 week Becoming Me program series. Girls who join Girl Scouts for the first time or renew their Girl Scout membership in April will be able to attend a member-exclusive virtual event in early May. This virtual experience will feature a conversation between Girl Scouts and Mrs. Obama during which she will explore the themes in *Becoming: Adapted for Young Readers* and how they relate to Girl Scouts’ and young people’s experiences today.

The Becoming Me program will be available at no additional cost to any interested Girl Scout member enrolled for the 2021–22 membership year. Available to girls in grades K-12, the program will walk girls through earning three badges at each Girl Scout level.

Becoming Me is not just a special program for girls, but a new opportunity for adults to lean in and support girls’ journeys to finding their path and reaching their full potential. By becoming an adult Girl Scout member, your [members/participants/families] can facilitate the program series and create a safe community space for girls to explore their own stories.

I would like to schedule a virtual meeting to learn about your needs and discuss how GSEP can support your girls as they build their bright futures, the Girl Scout way. Some good times for me are Wednesday, March 24th or Thursday, March 25th, between 3-5PM. If these dates are not good please let me know what dates and times work best for you. Please let me know if this opportunity would be useful for your community.

In partnership for our youth,



Mimi In

Community Engagement

Girl Scouts of Eastern Pennsylvania

267-422-4870 - Direct