

PAS WEEKLY

pennalexander.philasd.org

| Ms. Overton, Principal

| 215-400-7760

Upcoming Events:

FACE Workshop: K-2 Crayola Writing Inspired

Monday, January 11, 10am

Coffee with the Principal

Monday, January 11, 7pm

School Advisory Council (SAC)

Wednesday, January 13, 3:45pm

GSA

Thursday, January 14, 3:30pm

Student Grab & Go Meals

Friday, January 15, 9am-2pm

Martin Luther King, Jr. Day School Closed

Monday, January 18

EC Summer Reading Discussion

Tuesday, January 19, 7pm

2021-22 Kindergarten Registration Opens

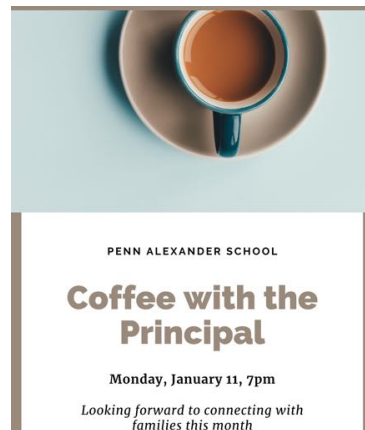
Tuesday, January 19



2021-2022 Kindergarten Registration

2021-22 Kindergarten Registration process opens January 19 and closes February 5, 2021. See enclosed flier for more details or visit our website:

<https://pennalexander.philasd.org/kindergarten-enrollment/>



Coffee with the Principal

Please join me on Monday, January 11 at 7pm at the Zoom link below.

<https://us02web.zoom.us/j/9751540779?pwd=Slc5Y2o3T2VuUmRLa01WdExVMzNRQT09>

Meeting ID: 975 154 0779 Passcode: 820583 Mobile: +13017158592

Reminder - 4th & 5th Grade Find/Order Your Recorder

4th and 5th grade students if you need a recorder for the Spring music unit with Ms. Lam, please complete the form below by **January 15**. Recorders are \$5 each. 5th graders should check in with Ms. Lam if they do not have one as they may ordered one last year.

<https://forms.gle/DwajcVJSAMv8XauB6>



Travel Restrictions with School District Student Apps

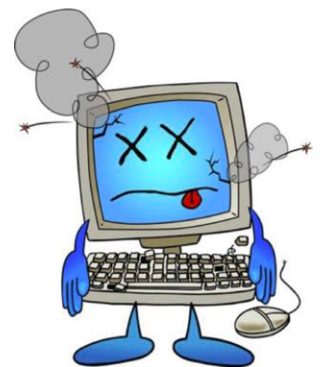
As a reminder access to School District services like Google Classroom or Zoom meetings is typically not available from outside the contiguous United States. While you may have an Internet connection through your provider, your student will not be able to access their virtual classroom.



CHROMEBOOK ISSUES?

During the first weeks of online learning, we have noticed some students are still having difficulty with the loaned Chromebooks.

If you would like assistance, please complete [this form](#).



FREE Internet expanded

PHL ConnectED - free internet access for eligible families has expanded its program. You may be eligible if you have internet in your home and 1) Participate in a public benefit program with income qualifications; OR 2) your child is an English Language Learner; OR 3) your child receives special education services. **Call 211 for assistance.**

PHLConnectED

Discounted Internet from Verizon

Not eligible for Internet Essentials? Try Verizon! Federal stimulus funds include a large amount for broadband! The biggest news is that they include a short-term subsidy for internet for almost any low-income household separately from Lifeline of up to \$50/month and additional funds for purchasing of devices. NDIA put the highlights of this new program here: https://drive.google.com/file/d/1-vTutF3aJptsQUo6_ClpOYnu-JPiTdYI/view.



Parent Portal - Made Easy with the App!

The School District Parent Portal for student attendance, grades, reports and more has an app! Get grades and attendance pushed to your smartphone with the Infinite Campus Parent App. Click on either of these links for more information: [iPhone or iPad App](#) or an [Android device](#)





**Penn Alexander Elementary School
2021-2022 Kindergarten Registration Process**

The following are the guidelines and timelines that will govern how the application and selection process will be conducted to register students to the Kindergarten classrooms of the Penn Alexander Elementary School (PAS) for the 2021-2022 school year. **All applications must be submitted through the online registration system.**

Penn Alexander Kindergarten Lottery Process Timeline	
Registration dates	Monday, January 19, 2021 to Friday, February 5, 2021
School staff sends final list to OSEP via email.	Friday, February 10, 2021
School District processes applications	February 15, 2021 – February 19, 2021
Lottery letters mailed to students homes:	Friday, February 26, 2021

General Guidelines

- Only children who reside within the PAS Catchment are eligible for the lottery. All applications received after the close of the Kindergarten registration period will be placed on a wait list and will not be considered in the lottery process. Applications will be assigned to the waitlist in the order that they are received beginning with the first number after the lottery assigned students. Applications are considered complete once it has been marked complete by the school secretary.
- Two documents confirming residency within the catchment are required upon submission of the registration materials with one document being a Deed, a notarized lease, utility bill or government issued information. Water Bills, Residency affidavits and Delegations of Parental Responsibility will NOT be accepted. All information including immunizations MUST be submitted for consideration. All applications that meet the residency requirements will be placed in a lottery.
- This notice will be reviewed annually and placed on the School District website when the School District announces Kindergarten registration on or before January 11th. All notices will be translated into the District's eight major languages.
- All registration forms must be submitted to PAS on or before the deadline. The system will no longer take applications at 11:59pm on Friday, February 5, 2021.
- All enrollment decisions will only be communicated in writing via email to the email address used in completing the application. Enrollment decisions will not be communicated over the telephone nor will letters be given to parents by the Penn Alexander School or the School District's Education Center.
- For more information and to complete the online registration process, please visit www.philasd.org/studentplacement/registration

Proof of Address



**Penn Alexander Elementary School
2021-2022 Kindergarten Registration Process**

Proof of Address (Two (2) of the following is required)

Acceptable documentation includes the listed items below: One of the documents must be a deed, notarized lease, or utility bill. All residency information will be verified for accuracy. Additional information may be required during the verification process.

Deed or Notarized Lease	Valid DOT identification card
Mortgage settlement sheet	Current credit card bill
Current utility bill (gas, electric)	Recent vehicle registration
Recent property tax bill	Voter Registration Card showing current address
Valid driver's license or change of address card with your current address	Recent bank statement with current address
Letter from Social Security Office with current address	IRS Statement or other wage and tax statements e.g., W2, 1040, 1099
Letter from Public Assistance Office with current address	Recent Employer Pay Stub showing current address
Foster care/child care and DHS letters are acceptable for registration when a student is in the care of a foster/child care agency	Original lease with name(s) of parents/legal guardians and children
Signed property sales agreement, followed by original copy of settlement papers within 45 calendar days of settlement	

THE SADIE TANNER MOSSELL ALEXANDER
UNIVERSITY OF PENNSYLVANIA
PARTNERSHIP SCHOOL PRESENTS

Sounds of Change

A 4th + 5th Grade Virtual Performance

JANUARY 2021

[CLICK HERE TO BEGIN](#)

Our 4th and 5th graders spent the first half of the school year singing and learning how to record themselves to present this performance. The concert theme "Sounds of Change" was developed by the students to lend their voices to the social justice movements and causes they are passionate about.

Site Password - pasmusic

**SCHOOL DISTRICT OF PHILADELPHIA
FAMILY AND COMMUNITY ENGAGEMENT
OFFICE PRESENTS**

ART-INSPIRED WRITING

STORIES AWAKEN IMAGINATIONS. IN THIS WORKSHOP, PARTICIPANTS WILL USE ART AS A SPRINGBOARD TO CREATE STORIES. THESE CREATIVE TEACHING MATERIALS FEATURE WRITING PROJECTS FOR KIDS THAT HELP NURTURE CURIOSITY, CREATIVITY, COMMUNICATION, COLLABORATION, AND CRITICAL THINKING THROUGH AGE APPROPRIATE LITERACY ACTIVITIES.

**JANUARY 11, 2021,
10AM**

JOIN ZOOM MEETING

[HTTPS://US02WEB.ZOOM.US/j/9751540779?pwd=SLC5Y2O3T2VUUMRLA01WDEXVMZNRQT09](https://us02web.zoom.us/j/9751540779?pwd=SLC5Y2O3T2VUUMRLA01WDEXVMZNRQT09)

MEETING ID: 975 154 0779

PASSCODE: 820583

ONE TAP MOBILE

+13017158592

JOIN US AT OUR SAC MEETING!

Penn Alexander School Advisory Council (SAC)

Wednesday, January 13, 2021, 3:45-4:45PM

Zoom Link:

<https://us02web.zoom.us/j/9751540779?pwd=Slc5Y2o3T2VuUmRLa01WdExVMzNRQT09>

Meeting ID: 975 154 0779 Passcode: 820583

One tap mobile +13017158592

The Penn Alexander School Advisory Council (SAC) is composed of peer-elected stakeholders including parents, staff and community members. The SAC is a forum for discussion and collaboration with the PAS administration on school-based decision making with a focus on student achievement and school improvement.

COME SHARE YOUR VOICE!

The SAC meetings are public meetings that are open to all families and community members. The first thirty minutes of each meeting is reserved for family or community members to address the SAC in a public forum, each speaker will be given three minutes to speak. If you wish to speak at a SAC meeting, please email SAC Chairperson, Jessica McCollum at tjmccollum@gmail.com by 3:45PM on the day before the meeting. If you are not able to attend, you can submit a public testimony that will be shared with all SAC members.

To learn more about Penn Alexander's SAC and review a list of SAC members, please visit our SAC website-pennalexander.philasd.org/school-advisory-council/

January 2021 SAC Tentative Meeting Agenda

January 13, 2021, 3:45-4:45PM

	Agenda Item	Time Estimate
1	Open Forum - 10 Demands for Radical Education Transformation - Black Lives Matter Week of Action	30 minutes
2	Approval of December 2020 Meeting Minutes	5 minutes
3	PAS parent rep elections	5 minutes
4	Digital Learning & Digital Learning Schedule moving forward	5 minutes
5	Principal Report	10 minutes
6	Future SAC Meeting Dates: Monday, February 8 - 3:45pm-4:45pm	5 minutes

Beth Clauss

PAS's systemic approach to our community's well being

During a conversation with Beth Clauss, PAS's Social Work Supervisor through the University of Pennsylvania, a parallel stood out between the description of her team's approach to supporting the PAS community and how we, as families operate each day. In partnership with Ms. Knight's counseling services, Beth and her team explore the support of the *whole* child within a family unit, a school, and their community.

Beth has worked in this role for 12 years. She is typically onsite 2 days a week, and her three University of Pennsylvania School of Policy and Practice Interns are onsite 3 days a week. During Covid-19 their roles have been responsive to our new learning environment and to the unique challenges that have arisen within the PAS community. Their clients are students, teachers, administrators, parents as we ALL play a role on the team and ALL need supporting. If students are experiencing challenges in school - academically, emotionally, behaviorally - they may be referred to work with Beth and her team. Working directly with Ms. Knight, our school counselor, Beth and her team provide referrals to external supports as well as explore issues within the systems-based framework. She sees herself and her team as a sounding board for teachers, administrators, students and parents. Together, the entire team is able to address the various challenges that go along with schooling and life.



During this academic year the work has included supporting age and developmentally appropriate social and emotional learning lessons across the grades, focusing on issues like: coping skills; mindfulness; time management; student's feelings about school; and their need to get work done each day within this new context. As an extension of this work, Beth and her team have also been having many telephone conversations with parents about student and parent emotional struggles related to Covid-19, big feelings about not being in school and the impact that has on student's love and enjoyment of school, and how to work with and support our students through this unprecedented experience. It was this work that lead Beth and her team to join the upcoming January 21st HSA meeting @ 6:45 p.m.

Please join in to hear directly from the team supporting our community and learn more about these valuable resources available to support your family.





PAS Home & School Association General Meeting: Unprecedented Parenting: Supporting your child emotionally during virtual learning

January 21, 2021
6:45pm – PAS HSA Meeting
7:00-8:00pm - Workshop

Please join us as the PAS Social Work team shares strategies and tools for how to best support our children and ourselves during this challenging school year.

If you wish, please complete the following form to submit topics, questions or challenges that you hope will be addressed during the workshop:

<https://forms.gle/Xpk2aBawPtM6QA2y7>

Presenters include:

Beth Clauss, MSW, LCSW has 20+ years of experience in working as a social worker and supervisor. Her experience is largely in clinical practice with children and families in school-based settings and hospitals. For the past 12 years, she has been the school-based social worker at Penn Alexander School and has provided clinical supervision and instruction for MSW students from the University of Pennsylvania. Beth is also a certified trauma-informed professional and brings this area of focus to her practice. MSW, Clinical Social Work, Columbia University, BS, Human Service Studies, Cornell University

Gwendolyn Y. Davis, MSW/Ph.D. has 30+ years of experience as a therapist, child advocate, educator and research coordinator in schools, community centers, prisons, homeless shelters, and social service agencies. She has designed curriculum to promote the social and emotional development of children, to support parents in rearing their children and to help parents move towards self-sufficiency. She has co-authored several publications, including *Stickin' To, Watchin' Over, and Gettin' With: African American Parent's Guide to Discipline* as well as several others related to managing anger and aggression in youth. Dr. Davis currently serves as Executive Director of Social Work Connections, a non-profit social service agency that provides parent education programs to parents designed to reduce incidences of child abuse and neglect and to ultimately help stabilize families. Ph.D., School, Community & Child Clinical Psychology, University of Pennsylvania, MSW, Social Work, University of Pennsylvania, BS, Psychology, Dartmouth College

Zoom link:

<https://us02web.zoom.us/j/9751540779?pwd=Slc5Y2o3T2VuUmRLa0lWdExVMzNRQT09>

Meeting ID: 975 154 0779

Passcode: 820583

Phone: [+13017158592](tel:+13017158592)

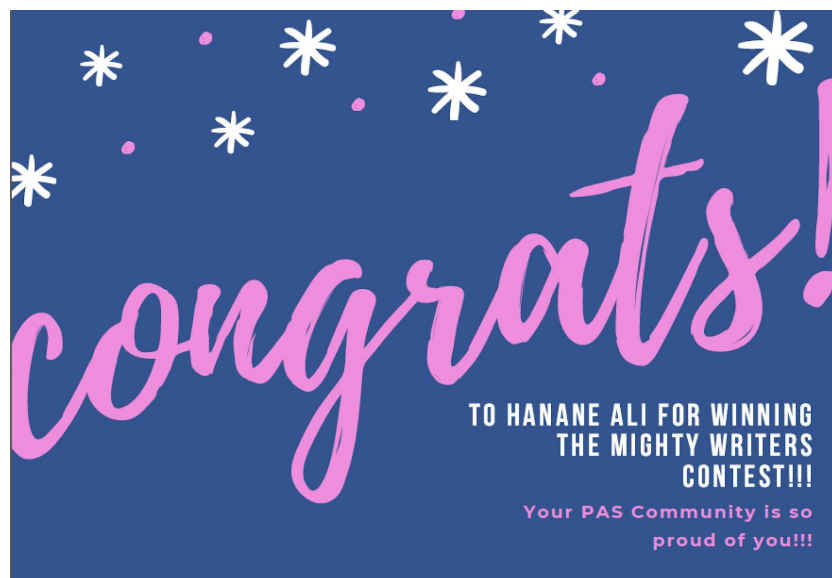


January 25-March 15, 2021
Mondays & Wednesdays
3:30-4:30pm
5 students per instructor
Python offered for grades 4-8

Sign up here by January 15: <https://forms.gle/ySTaMM6oKsFH8wcM8>

For more information about the Fife-Penn CS Academy, please visit: <https://fife.cis.upenn.edu/>

Contact Ann Kreidle at 215-284-8601 or kreidlea@upenn.edu for questions.



The snow covering the trees like a sheet of blanket
The footprints that seemed oh so familiar to the bottom of your shoe
A soft pat on the ground leaving a bald spot
Waiting to be renewed with a layer of white fluff
You stare at the field to see
The snow packed so tight in their gloves
Over and over

Scoop

Mold

Pact

Repeat.

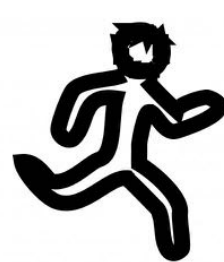
You'd pray that the ball of ice stay in its form while being thrown
A burst of crystals disperse on your targets face
The anxiety pumping through your chilled body
Your bag launched to the ground
Disrupting the tree covered in snow
A trickle of ice down from that tree
Your nose red as a apple felt the the light sting of a snowflake fall on to it
You embrace this snow and let it stay
Just for this one day

Hanane Ali, age 13



RUN 2021

Student Running Challenge



The Challenge:

Run 21 miles in January of 2021! Track your miles using this [Google Sheet](#). At the end of the month, any student who runs 21+ miles will be entered into a raffle to win running gear!

Some sample routes are provided below to get you started! New routes will be posted weekly!

Be sure to follow the rules on the next page!



Rules to Participate:

Run 2021 is not a school event so be sure to get permission to run from your parent/caregiver.

Follow City Health [Guidelines](#). - wear a mask & stay 6 feet apart

Make sure you [stretch](#) before and after each run.

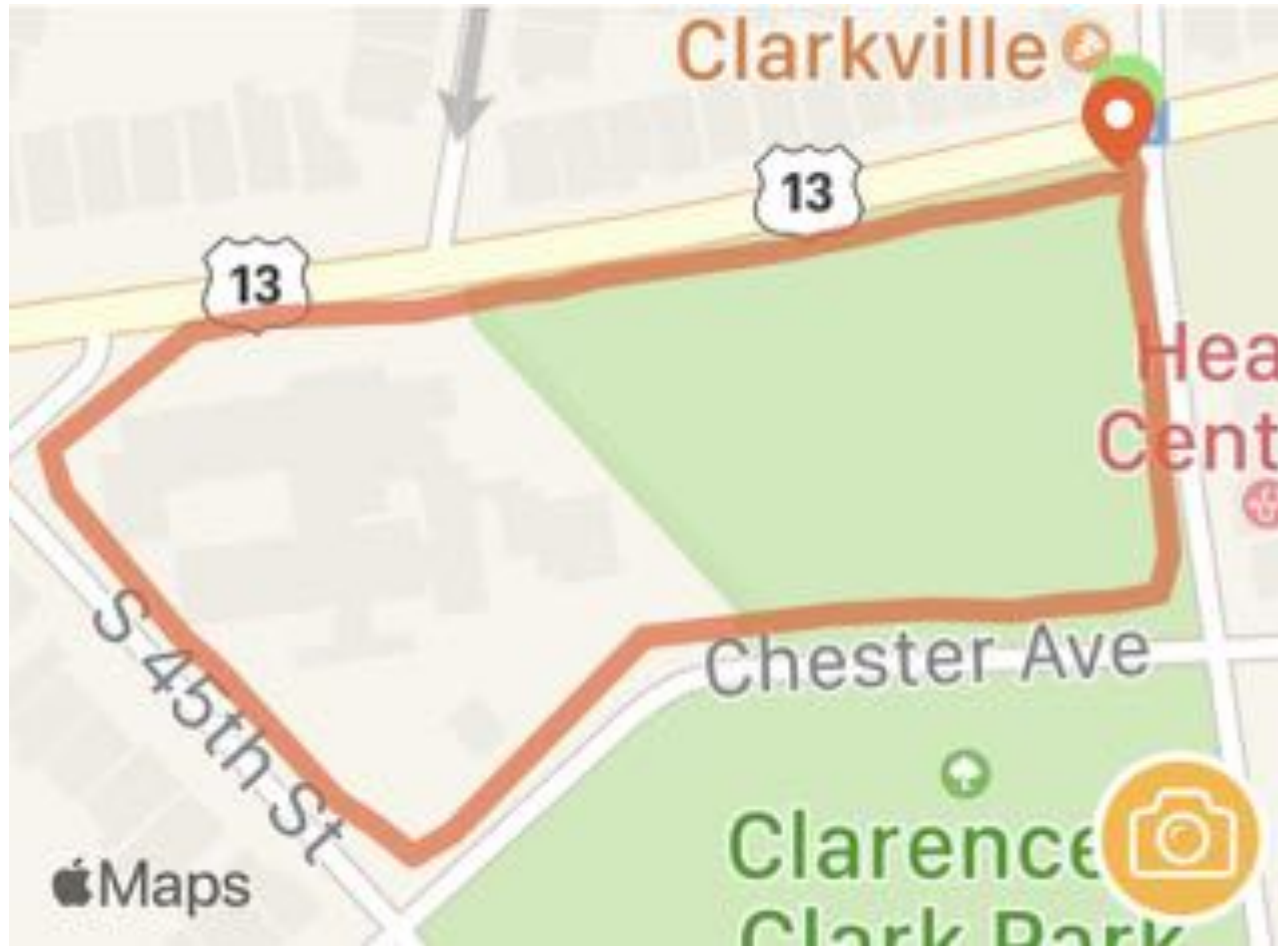
Drink some water when you get home. It's important to stay hydrated.



PAS Loop:

Circle PAS

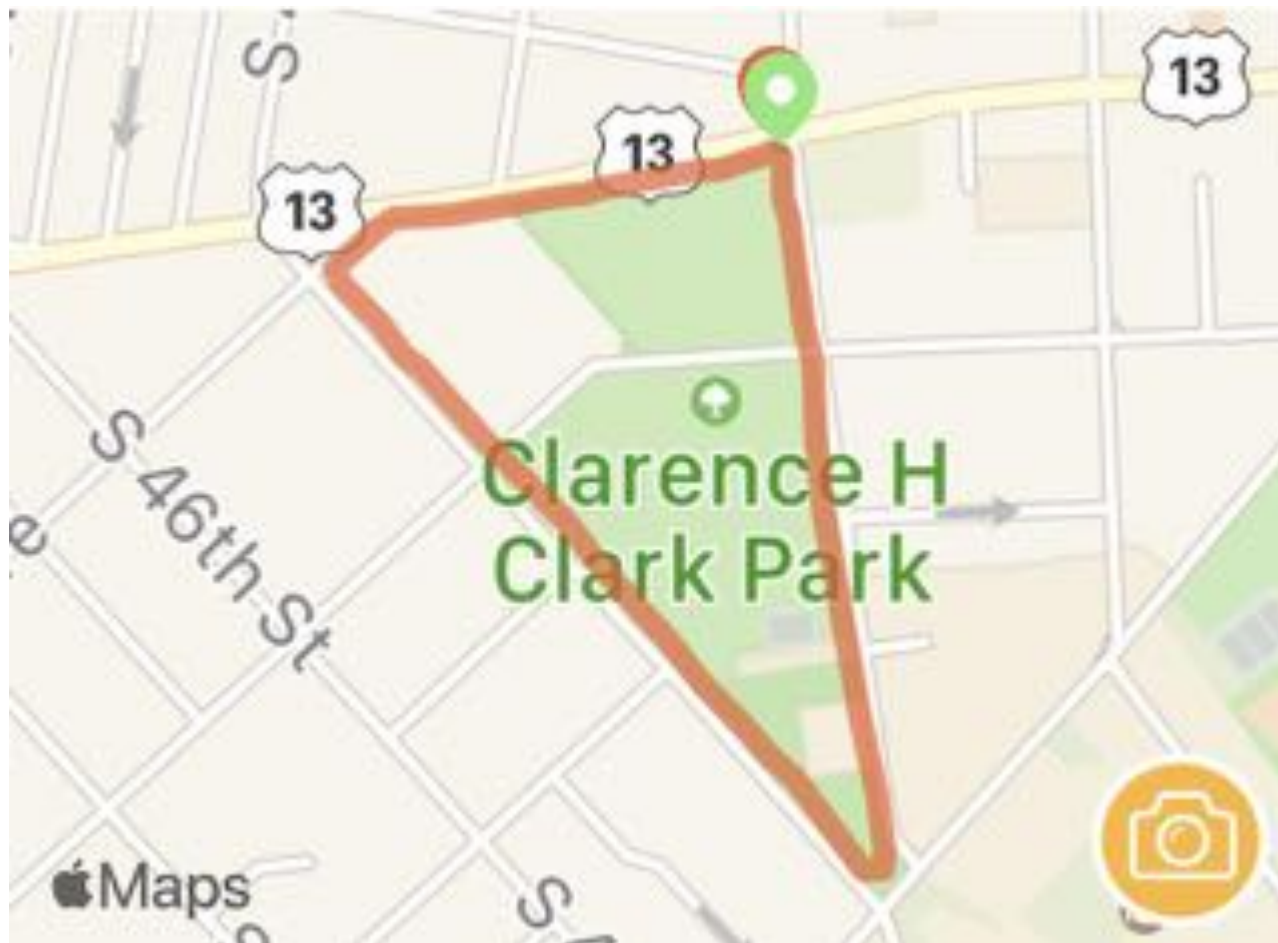
0.37 Miles



Clark Park A Loop:

43rd & Baltimore →
43rd & Chester →
45th & Chester →
45th & Baltimore →
43rd & Baltimore

0.45 Miles



Clark Park Full Loop:

43rd & Baltimore →
43rd & Woodland →
45th & Baltimore →
43rd & Baltimore

0.74 Miles