

# PAS WEEKLY

[pennalexander.philasd.org](http://pennalexander.philasd.org) | Ms. Wapner, Principal | 215-400-7760

## Upcoming Events:

### Interim Reports 4-8GR

Mon., Dec. 16

### Winter Concert 4-8GR

Tues., Dec. 17, 6pm  
(5:30 doors open/students report)

### Spring Musical CAST Auditions

December 17 & 18, 3-5pm

### NonEnglish Speaking Parents Chat & Chew

Wed., Dec. 18, 8:30am

### FACE Workshop Scholastic Spotlight on Reading (K-2)

Wed., Dec. 18, 8:30am-NESP  
(NonEnglish Speaking Parents)

### PAS Science Fair 4-5GR

Wed., Dec. 18, 8:30am

### Winter Break, School Closed

Mon., Dec. 23-Wed., Jan. 1

### School Resumes

Thurs., Jan. 2

### Sadie Tanner Mossell Alexander's Birthday

Thurs., Jan. 2

### Boys/Girls Basketball @ MYA

Wed., Jan. 8

### Boys/Girls Basketball @ PAS

Mon., Jan. 13

### Boys/Girls Basketball @ PAS

Wed., Jan. 15

## End of Year Thank You

The teachers and staff of Penn Alexander would like to wish you a warm, and restful winter break. Over the past few weeks, as we close out the 2019 calendar year, we've celebrated many special occasions at PAS. Our student musicians warmed our hearts at our K-3 and 4-8th grade **Winter Concerts**; our young scientist inspired us at our 4th & 5th grade **Science Fair**; and, our 16th Annual 3rd Grade **Annual Rice Celebration** brought our community together to learn from one another. The spirit of giving has been exemplified in the **Harvest Drive** and **HSA Annual End of Year Appeal** and through all of the helping hands from many in our community. We hope you enjoy the Winter Break with family and friends, and look forward to an exciting 2020 year.

## Choral & Instrument Winter Concert

### - Please Join Us!

Please join us for our annual 4-8GR Choral and Instrumental winter concert on Tuesday, December 17 at 6pm! Students have been practicing all semester and are ready to share their love for music with our school community. The concerts will feature our choir, band and orchestra.



**KINDERGARTEN  
REGISTRATION**

## 2020-2021 Kindergarten Registration

Registration information coming soon. Check back here and on the PAS website for details in January.

# HOLIDAY COLLECTION FOR ALL TEACHERS & STAFF



## HELP RECOGNIZE AND THANK ALL OF OUR TEACHERS - CLASSROOM and SPECIALISTS - AND STAFF!

The HSA is collecting donations to provide holiday gifts to all of our hardworking teachers, specialists (gym, music, library, computer, learning support, and more), recess and lunchroom staff, custodians, etc.

The HSA will pool all donations and distribute them on an equitable basis so that everyone knows how much they are appreciated by the PAS community. In order to meet our gift goal, each classroom is asked to contribute at least \$400 (or approximately \$20 per student). Your contribution to the group gift is completely optional. Any amount — \$5, \$25, \$100, or whatever you can comfortably give — is greatly appreciated.

**DEADLINE FOR COLLECTION is the morning of Friday, December 20.**

- ❖ **Cash or Check (made Payable to “HSA of PAS”)**
  - Put your donation in an envelope labeled “Teacher/Staff Gift” along with your room number(s).
  - Return to your Room Parent or the PAS Office
- ❖ **Credit Card**
  - Pay online and select the “Teacher Gift” option on the Shop page
  - <https://pennalexanderschool.org/shop/>
- ❖ **Venmo**
  - @PennAlexanderHSA; label as “Teacher/Staff Gift” along with classroom number
- ❖ **PayPal**
  - Penn Alexander Home and School Association; label as “Teacher/Staff Gift” along with classroom number

PENN ALEXANDER MUSIC

# 4-8 INSTRUMENTAL + CHORAL CONCERT

---

Featuring PAS students  
in grades 4-8. All PAS  
community members  
are welcome to attend!

**Tuesday, December 17**  
**6:00 PM**  
**Penn Alexander School**

Volunteers Needed!  
Contact Ms. Lam  
([tlam2@philasd.org](mailto:tlam2@philasd.org)) if  
interested.





# ANNUAL WINTER APPEAL

DECEMBER 2019

## THANK YOU!

We had a record-breaking Giving Tuesday – raising over \$24,000 for Penn Alexander! We are grateful for your tremendous participation on this annual day of giving. Your support makes so many things possible for our children; helping make our school a stand-out as a National Blue Ribbon school.

## 100% Family Participation!

This year, our goal is to have **100% Family Participation** and a total fundraising goal of \$135,000 for the school year. An average donation of \$100 per student will help get us to our goal. We are asking every family to participate to ensure that our community comes together to support our neighborhood school and the amazing program it creates for our students. **No matter what size, your contribution matters.** Every single donation from \$5 to \$5,000 supports our children, teachers, and staff.

## We are 43% there!

We are off to such a great start with 43% family participation and \$50,000 to date. Let's keep this momentum going. Please consider adding the PAS HSA to your end-of-year giving.

## Last Year, you raised \$127,000 to fund:

-  FULL-TIME ART POSITION: \$60,000
-  TECHNOLOGY: SMARTBOARDS, IPADS, 3-D PRINTERS: \$20,000
-  ENRICHMENT: BABY CHICKS, AFTERSCHOOL, ATHLETICS, DANCING CLASSROOMS, FIELD TRIPS: \$15,000
-  CLASSROOM AND STUDENT SUPPLIES: \$22,000
-  MUSIC AND SPRING MUSICAL: \$10,000

**YES! I WANT TO CONTRIBUTE TO 100% FAMILY PARTICIPATION in the amount of:**

\_\_\_ \$50    \_\_\_ \$100 (suggested per student)    \_\_\_ \$200    \_\_\_ \$500    \_\_\_ \$1,000    Other \$ \_\_\_\_\_

NAME: \_\_\_\_\_ EMAIL: \_\_\_\_\_

### My Student(s):

Name: \_\_\_\_\_ Room Number: \_\_\_\_\_ Grade: \_\_\_\_\_  
Name: \_\_\_\_\_ Room Number: \_\_\_\_\_ Grade: \_\_\_\_\_

- WAYS TO SUPPORT:**
1. **Check:** made payable to "PAS HSA" and return in your child's PONY along with this form
  2. **Credit card:** online at <https://www.pennalexanderschool.org/>
  3. **PayPal** (search for [hsatreasurerpas@gmail.com](mailto:hsatreasurerpas@gmail.com); list as December donation)
  4. **Venmo** (@PennAlexanderHSA; list as December donation)
  5. **Stock transfer:** Please contact Roseann Liu ([hsatreasurerpas@gmail.com](mailto:hsatreasurerpas@gmail.com)) for more information

**My company may match charitable donations; please contact me. Company Name:** \_\_\_\_\_

# Call for Volunteers!

*(no experience necessary)*



**Saturday, January 11, 2020**

**Penn Alexander is once again hosting a FIRST Lego League  
Robotics Qualifier *(26 rookie teams this year)***

**We need judges; we need concessionaires; & so much more!**

**Email Ann Kreidle at [kreidlea@upenn.edu](mailto:kreidlea@upenn.edu)**

**or**

**Sign up here:**

1. Go to [firstinspires.org](http://firstinspires.org)
2. Create an account in the *FIRST* Dashboard - sign up is located in the top right corner of this page or by clicking the "Start Volunteer Registration" button below.
3. Click the Volunteer Registration tab & choose 'Volunteer at an Event'.
4. Filter events by location/ program and select an event. - Penn Alexander January 11
5. Choose up to five roles and apply.
6. You will receive an email from Ann Kreidle with next steps.



دردش و تحدث

## New Resource for NonEnglish Speaking Parents

### 非英语家庭的新资源

## موارد جديدة للاباء و الامهات الغير ناطقين باللغة الانكليزية

**Chat & Chew in Arabic, Bengali or Chinese with PAS Bilingual Counseling Assistants Radwan Mahmoud, Abu Rahman, and Chengyi Wen**

家长聊天活动时，会有双语中文辅导员协助

تحدث و دردش بالعربية و البنغالية و الصينية مع المساعدين الاستشاريين الذين يجيدون التحدث باللغتين الانكليزية و اللغات المذكورة اعلاه وهم رضوان محمود (العربية) ، ماني (البنغالية) ، تشنغ وين (الصينية) .

<b>--Learn about free resources to help your child</b> <b>--Enjoy light refreshments</b> <b>--Socialize with other parents</b>	يمكنكم التعرف على الموارد المجانية لمساعدة أطفالكم استمتعوا بالحلويات الخفيفة استمتعوا بالتحدث وربط صداقات مع الاباء و الامهات الاخرين	快来下载！发现帮助孩子的免费资讯！ 提供饮料 与其他家长建立联络	
--	--	--	--

**Wednesday, 8:30am, PAS Library**

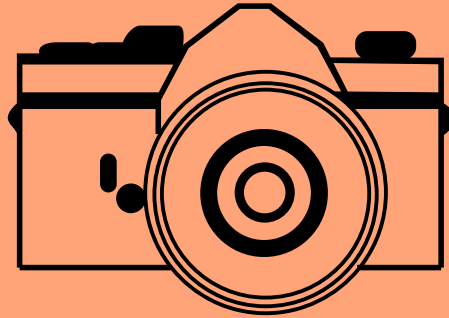
**周三，早上8:30，学校图书馆**

تواريخ هذه اللقاءات: أيام الاربعاء الساعة 8:30 صباحا وفق

October 16	اكتوبر 1 تشرين الاول 16	10月 16日	
November 20	نوفمبر 1 تشرين الثاني 20	11月 20日	
December 18	ديسمبر 1 كانون الاول 18	12月 18日	
January 15	يناير 1 كانون الثاني 15	1月 15日	
February 19	فبراير 1 شباط 19	2月 19日	
March 18	مارس 1 اذار 18	3月 18日	
April 15	ابريل 1 نيسان 15	4月 15日	
May 20	مايو 1 ايار 20	5月 20日	

W H Y Y M E D I A L A B S

# AFTER SCHOOL CLUB



**EVERY  
THURSDAY  
3PM  
RM 320**

## ATTENTION MIDDLE SCHOOL STUDENTS !

EACH THURSDAY FROM 3 PM TO 4:30 PM, STUDENTS CAN STAY AFTER SCHOOL TO WORK WITH THE PAS NEWS TEAM IN OUR WHY Y MEDIA LABS PROGRAM. STUDENTS DO NOT HAVE TO ATTEND THE WEEKLY ENRICHMENT CLASS TO PARTICIPATE IN THE AFTER SCHOOL CLUB. CLUB MEETINGS RUN ALL YEAR.

- LEARN VIDEO AND AUDIO PRODUCTION
- WORK BEHIND THE SCENES OR IN FRONT OF THE CAMERA !



 SCHOLASTIC

LITERACY  
EVENTS



Spotlight on Reading

Reading and  
Writing Connection

Scholastic Literacy  
Events Summer Reading

PENN  
ALEXANDER  
SCHOOL

PARENT NAME:

-----

STUDENT NAME:

-----

PHONE:

-----

EMAIL:

-----

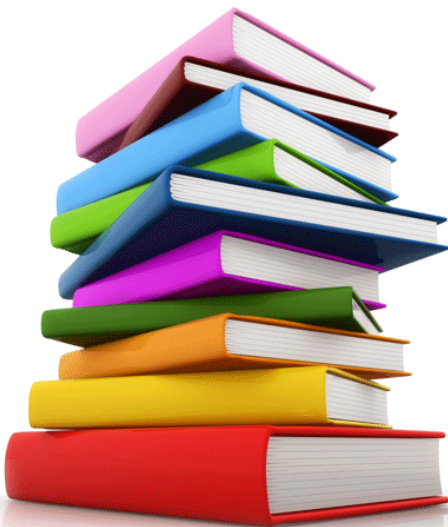
# Parent Workshop!!

## Grades K-2 ND

December 5, 2019, 6pm  
&

December 18, 2019, 8:30am  
(for NonEnglish Speaking Parents)

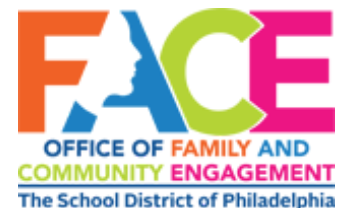
### All Parents & Family Members Are Invited



## Free Books! Fun!

## Childcare!

4209 SPRUCE STREET  
(ENTER ON 43RD STREET,  
ACROSS FROM CVS)







# COMEDY CLASSES FOR K-12

Enroll in the Funniest School In Philly! **Scholarships Available.**

**build confidence, learn collaboration, and make friends!**

**KIDSANDTEENS@PHILLYIMPROVTHEATER.COM**

**2030 SANSOM STREET, PHILADELPHIA, PA 19103**

**267-233-1556 | PHILLYIMPROVTHEATER.COM/KIDSANDTEENS**





# Enrolling Now!

Philly Improv Theater's Kids & Teens comedy classes create a welcoming, safe, and fun place for students from kindergarten through high school to develop their creativity and comedic talent, while making new friends and sharing tons of laughs.

Whether you're already the class clown, looking to break out of your shell, or just want to make friends with the funniest kids in Philly, our improv curriculum is designed to delight and challenge every student at a developmentally appropriate level, allowing them to feel supported, comfortable, and accomplished as they learn the art of improvisation.



[KIDSANDTEENS@PHILLYIMPROVTHEATER.COM](mailto:KIDSANDTEENS@PHILLYIMPROVTHEATER.COM)  
2030 SANSOM STREET, PHILADELPHIA, PA 19103  
267-233-1556 | [PHILLYIMPROVTHEATER.COM/KIDSANDTEENS](http://PHILLYIMPROVTHEATER.COM/KIDSANDTEENS)



**everybody**  
MOVEMENT & WELLNESS

## AFTER-SCHOOL MOVEMENT CLASSES

### WHERE:

EveryBody | 4305 Locust St, Philadelphia

### CLASSES:

Yoga | Tumbling | Jazz | Ballet | Hip-hop

### WHEN:

After school: 4pm Monday – Friday

Weekends: Saturday & Sunday mornings

### PICK UP:

Available after school

LEA | PAS

### FIND US ONLINE AT

[EveryBodyMovesPhilly.com](http://EveryBodyMovesPhilly.com)

### PRICING:

After-School Series

\$112

After-School Series with Pick-Up

\$155



**Register Now**  
**2019-2020**



Ballet  
Modern  
Tap  
Acro/Jazz  
Hip-Hop  
Musical  
Theater  
African  
Boys Tap/  
Hip-Hop  
Broadway  
Jazz

**GWENDOLYN BYE**  
**DANCE CENTER**

3611 Lancaster Avenue • Phila., PA 19104

**First Class Free!**

For New Students Only

**boys & girls ages 3-18**

On-Going Registration • Year Round Classes

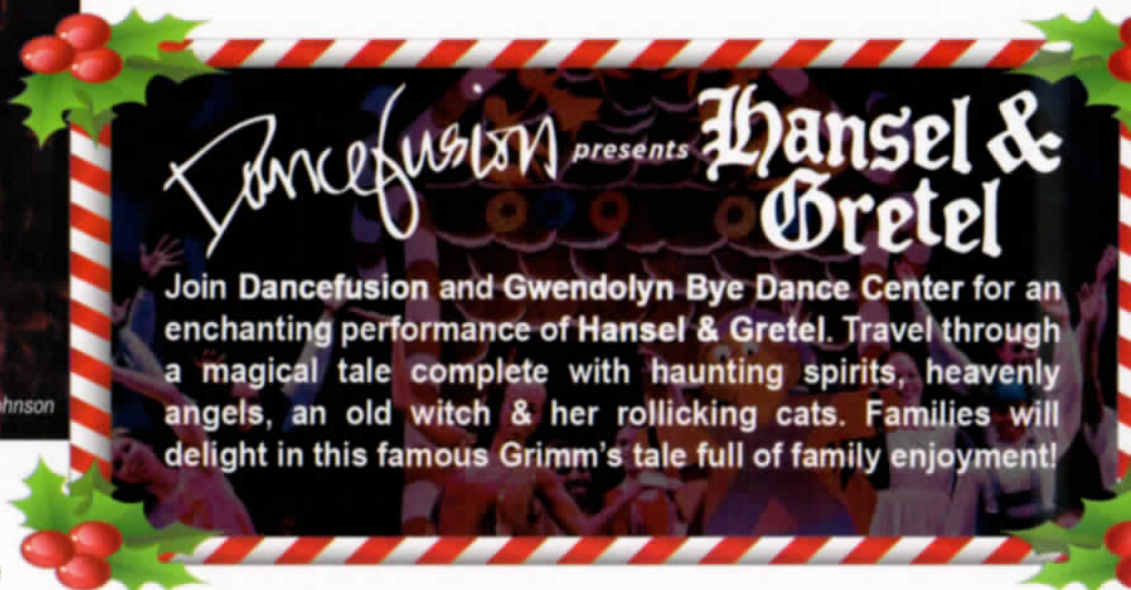


**215-222-7633**

[www.gbyedance.org](http://www.gbyedance.org)



Dancefusion  
3611 Lancaster Ave.  
Philadelphia, PA 19104



# Dancefusion presents Hansel & Gretel

Join Dancefusion and Gwendolyn Bye Dance Center for an enchanting performance of Hansel & Gretel. Travel through a magical tale complete with haunting spirits, heavenly angels, an old witch & her rollicking cats. Families will delight in this famous Grimm's tale full of family enjoyment!

**zanne Roberts Theatre**  
0 S. Broad Street  
Philadelphia, PA 19146



**Performances:**  
Dec. 21 - 2:00pm Matinee  
Dec. 21 - 7:00pm Evening

**Tickets:** Orchestra Center: \$45  
Orchestra Side: \$40  
Balcony: \$30 Adults – \$20 Child/Student

**urchase Tickets Online at:**  
[dcdancefusion.ticketleap.com](http://dcdancefusion.ticketleap.com)

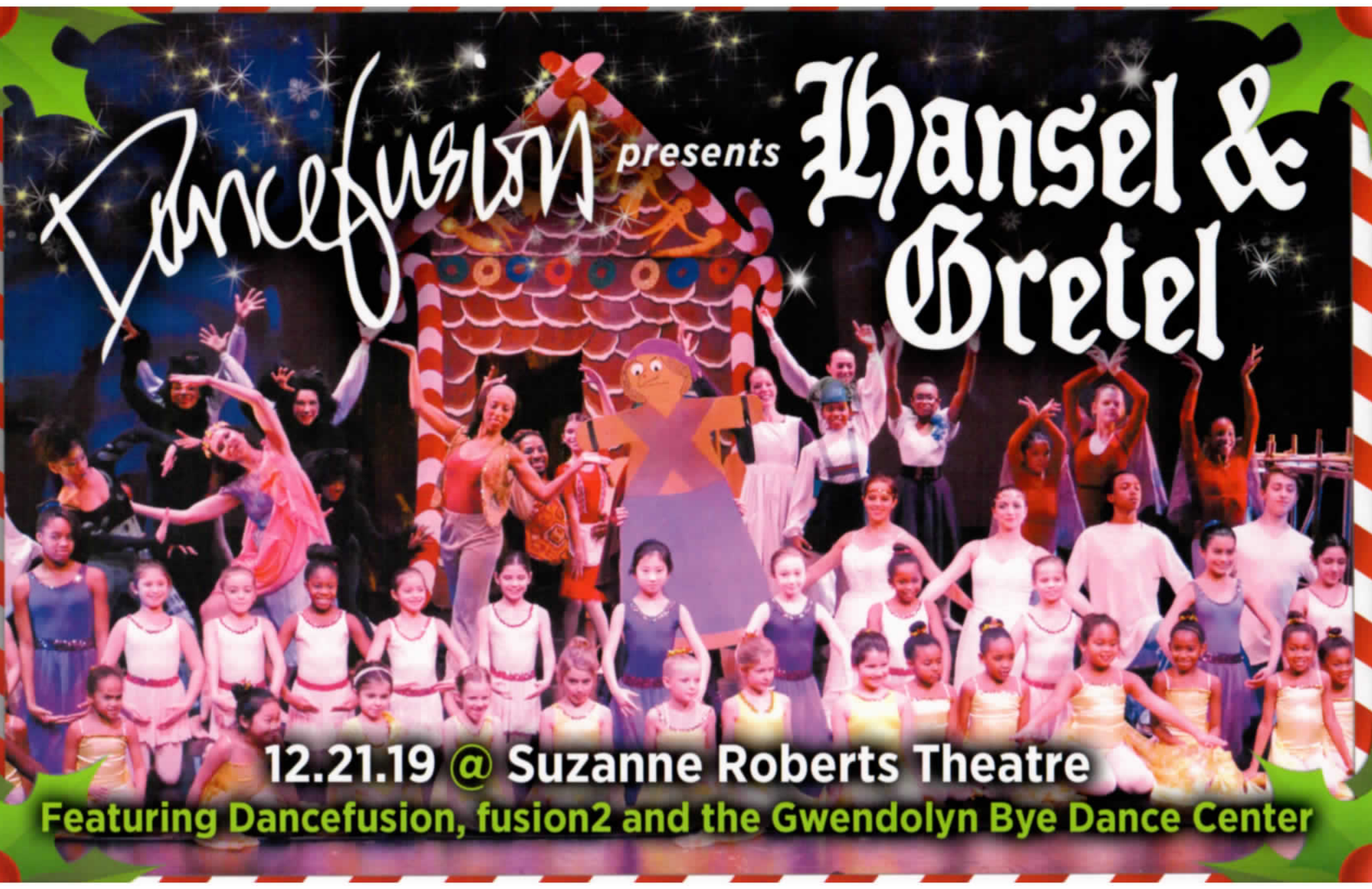
**Credit cards accepted**

**ormation:**  
wendolyn Bye Dance Center  
5-222-7633 / [www.gbyedance.org](http://www.gbyedance.org)

Sponsors:    
Copyright: Dancefusion 2019  
Photo Credits: R. Bye and Y. Clayton

*Dancefusion* presents

Hansel & Gretel



12.21.19 @ Suzanne Roberts Theatre

Featuring Dancefusion, fusion2 and the Gwendolyn Bye Dance Center

The Philadelphia Dance Academy  
& The Philadelphia Youth Ballet

the present  
**The Nutcracker**



**Mandell Theater at Drexel University**

33rd & Chestnut Streets, Philadelphia, PA 19104

**Saturday, December 14**  
2:00pm & 5:30pm

**Sunday, December 15**  
12:00pm & 3:30pm

the  
**philadelphia**  
**DANCE**  
**ACADEMY**

**Tickets are \$15-\$35**

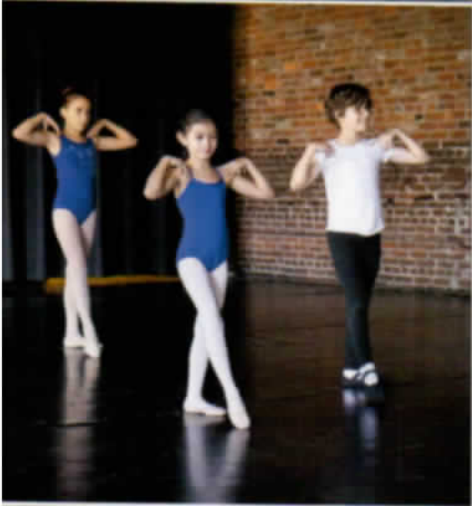
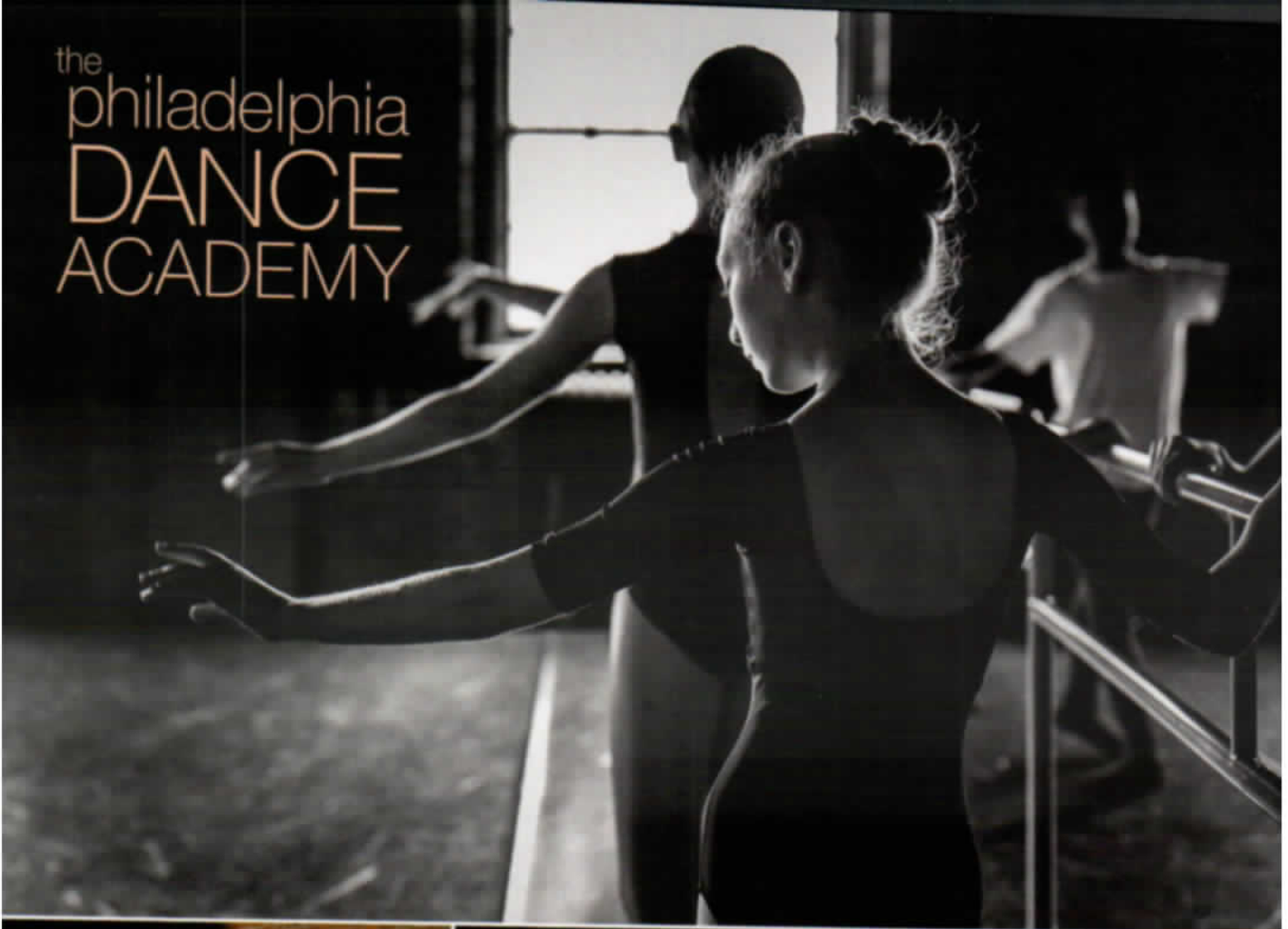
To purchase, visit [www.PhiladelphiaDanceAcademy.com](http://www.PhiladelphiaDanceAcademy.com)

Call **215.922.2422** for information

photographer: **Victoria Bastian**



the  
philadelphia  
**DANCE**  
ACADEMY



**2020 SUMMER DANCE PROGRAMS**  
[philadelphiadanceacademy.com](http://philadelphiadanceacademy.com)

**WEEKLONG SUMMER  
DANCE PROGRAMS**  
(Mon-Fri)

**HALF DAY PERFORMING ARTS**

Ages 4-6, 9am-12pm, \$250 / week

*Explore Ballet, Theater Dance & Pilates with a developmentally-appropriate approach*

**FULL DAY PERFORMING ARTS**

Ages 6-10, 9am-3pm, \$375 / week

*Polish basic technique and explore new genres: Ballet, Theater Dance, Pilates, Contemporary & Choreography*

**INTERMEDIATE INTENSIVE**

Ages 8-13, 9am-3pm, \$375 / week

*Refine technique and develop strength in the genres listed in Full Day. At least 2 yrs ballet training required; must attend at least 2 wks*

**FOUR-WEEK  
INTERMEDIATE/ADVANCED  
INTENSIVE | JULY 6-31**

Ages 12+, 9am-3pm, \$1500

*Examine and perfect ballet technique while exploring artistic versatility. Classes include Pointe, Ballet Repertoire, Variations, Salsa, Yoga, Franklin Method & more. At least 5 yrs ballet training required; new students audition by May 1*

**EARLY DROP-OFF 8:15-9am | for half and full day programs**  
**AFTER CARE 3-5pm | for full day programs only**

**LOCATION:**  
Old City Philadelphia  
& Main Line

**FOR PROGRAM DATES & REGISTRATION:**  
[philadelphiadanceacademy.com](http://philadelphiadanceacademy.com)  
[philadanceacademy@gmail.com](mailto:philadanceacademy@gmail.com) | 215.922.2422

**CLASSES**

**CREATIVE MOVEMENT**

Ages 2.5-4, 1 class per week

4 WEEKS for \$80 | Tue or Thu 10:30am

8 WEEKS for \$160 | Sat 9:30am

*Cultivates the joy for ballet in our youngest dancers through the use of music, props & imagination; 1 hour*

**PRE-BALLET 1 & 2**

Ages 4-6, 1 class per week

8 WEEKS for \$160 | Sat 10:30am

*Introduces more structure and ballet vocabulary to the class; 1 hour*

**INTERMEDIATE/ADVANCED  
MAINTENANCE BALLET**

Ages 12+, Mon-Thu 5-7pm, \$100 / week



*all photos: Tricia Pompilio*

# WHAT IS PHILLYCAM?

## OUR MISSION

*PhillyCAM is a community media center that brings together the people of Philadelphia to make and share media that promotes creative expression, democratic values and civic participation.*

We are a non-profit organization that offers its members opportunities to create and share non-commercial media via our cable channels, web platforms, and low-power FM radio station--106.5FM.

We offer affordable year-round training classes that help people learn how to use our equipment to produce their own original local media content. Whether you are a beginner or a professional, we are here to serve all residents of the greater Philadelphia area who want to learn and make media in a collaborative environment.

PhillyCAM also provides technical production and training services for non-profits, community groups, and educational institutions. We support groups that want to tell their own stories through media, raise awareness about local issues, and achieve solutions through community partnerships.



# CONNECT

When you become a PhillyCAM member you join a vibrant community of creative and motivated people who are dedicated to making original media content that educates and entertains audiences.

## Annual Memberships for Individuals

*Valid for 12 months from date of purchase.*

- Adult: \$30
- Senior: \$20 (65 and up)
- Student: \$20 (with valid student ID)
- Youth: \$15 (ages 14-21)

## Annual Memberships for Groups

*Non-profits & Community Groups*

*Fee based on the group's operational budget*

- |                            |                             |
|----------------------------|-----------------------------|
| \$40 (budget \$0 - 50K)    | \$150 (budget \$251 - 500K) |
| \$100 (budget \$51 - 250K) | \$275 (budget \$501K +)     |

We also offer special membership packages for Educational Institutions & Local Businesses. Contact the Membership & Outreach Director for more info.

**GET INVOLVED AT PHILLYCAM.ORG**



the  
**SNOW  
queen**

By **CHARLES WAY**

From the story by **HANS CHRISTIAN ANDERSEN**

Directed by **WHIT MACLAUGHLIN**

Production  
Sponsor:



**Arden**  
THEATRE CO.

**Nov 27 – Jan 26**

**TICKETS: 215.922.1122 • ardentheatre.org**

ARDEN CHILDREN'S THEATRE PRESENTS

# the snow queen

**SAVE 50%**

Use code FRI for  
1/2 off Friday nights

**November 27 - January 26** F. Otto Haas Stage

Mon	Tue	Wed	Thu	Fri	Sat	Sun
		<b>Nov 27</b> 10a	<b>28</b> 10a	<b>29</b> 12p	<b>30</b> 12&4p	<b>Dec 1</b> 12 p
<b>2</b>	<b>3</b> 10a	<b>4</b> 10a	<b>5</b> 10a	<b>6</b> 10a&7p	<b>7</b> 12&4p	<b>8</b> 12&4p
<b>9</b>	<b>10</b> 10a	<b>11</b> 10a	<b>12</b> 10a	<b>13</b> 10a&7p	<b>14</b> 12&4p	<b>15</b> 12&4p
<b>16</b>	<b>17</b> 10a	<b>18</b> 10a	<b>19</b> 10a	<b>20</b> 10a	<b>21</b> 12&4p	<b>22</b> 12&4p
<b>23</b>	<b>24</b> 12p	<b>25</b>	<b>26</b> 12&4p	<b>27</b> 12&4p	<b>28</b> 12&4p	<b>29</b> 12&4p
<b>30</b>	<b>31</b> 2p	<b>Jan 1</b> 2p	<b>2</b> 10a	<b>3</b> 10a&7p	<b>4</b> 12&4p	<b>5</b> 12&4p
<b>6</b>	<b>7</b> 10a	<b>8</b> 10a	<b>9</b> 10a	<b>10</b> 10a&7p	<b>11</b> 12&4p	<b>12</b> 12&4p
<b>13</b>	<b>14</b> 10a	<b>15</b> 10a	<b>16</b> 10a	<b>17</b> 10a^&7p	<b>18</b> 12&4p^	<b>19</b> 12&4p
<b>20</b>	<b>21</b> 10a	<b>22</b> 10a	<b>23</b> 10a	<b>24</b> 10a&7p	<b>25</b> 12&4p	<b>26</b> 12&4p

Based on Hans Christian Andersen's classic fairy tale, *The Snow Queen* transports audiences on a journey through the four seasons! When Gerda's best friend is captured by the Snow Queen, it is up to her to rescue him from the icy palace. *The Snow Queen* celebrates the adventure of growing up and the magical power of friendship.

Most enjoyed by families with children ages 6 and older.

/ **SOLD OUT:** 12/7 at 4pm **Weekend pricing:** 12/24-1/1

^**ASL Interpreted:** 1/17 at 10am & 1/18 at 4pm

\***Girl Scout Day:** 12/14 at 12pm

Honorary Producers: Alta and Peter Hamilton, Hamilton Family Charitable Trust

**Arden**  
THEATRE CO.  
40 N. 2nd Street  
Philadelphia, PA 19106

**215.922.1122**  
**ardentheatre.org**

**Ticket Prices starting at: \$25**

**Add on tickets to the spring show for savings and exchange privileges:**

Dr. Seuss's  
**The Cat  
in the  
Hat**

