

PAS WEEKLY

pennalexander.philasd.org | Mr. Farrell, Principal | 215-400-7760

Upcoming Events:



**Election Day,
No School for Students**
Tuesday, November 6th

Scholastic Book Fair
Wednesday, November 7th
& Thursday, November 8th
9AM-12:30PM, 1:30- 6:30PM

Report Card Conferences
Wednesday, November 7th-
Thursday, November 8th

Noon Dismissal for Students
Wednesday, November 7th-
Friday, November 9th

**Veterans' Day Observed,
School Closed**
Monday, November 12th

**Girls Volleyball vs. McCall
(AWAY)**
Wednesday, November 14th

School Picture Day
Wednesday, November 14th

Report Card Conferences (November 7th & 8th)



Our first round of Report Card Conferences will take place on **November 7th & 8th.**

Kindergarten-5th grade families, you should have received communication from your child's teacher. If you do not have a scheduled time, please reach out to them directly.

Middle School families, report card conferences are scheduled on the following days and times:

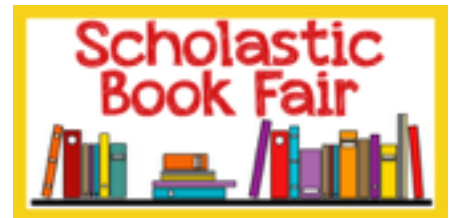
Wednesday, November 7, 1-3PM and 4-6PM
Thursday, November 8th 12:30-2:30PM and 3-5PM

Parents/Guardians should come to the PAS lunchroom to pick up your child's report card during any of the times above. You will be able to sign-up for individual conferences with your child's teachers at that time.

Scholastic Book Fair

Our Fall Scholastic Book Fair will be **open this week-**

Wed., Nov. 7th & Thur., Nov. 8th
9AM-12:30PM, 1:30- 6:30PM



17th Annual PAS Harvest Food Drive

PAS is collecting food donations for the University City Hospitality Coalition, a local organization that provides nightly hot meals to our homeless and needy neighbors.

Commercial size canned fruits and vegetables preferred, and bottles of BBQ sauce have been requested.



Picture Day is Coming

Order before Picture Day at mylifetouch.com

Picture Day is:

Wednesday, November 14, 2018

Penn Alexander School

1 VISIT:
mylifetouch.com

2 ENTER
your Picture Day ID
JL458011Q0

3 ORDER
your perfect package—and
don't worry about returning
anything on Picture Day!



Earn & save!
Join **MyFamily Rewards™**
when you order online.



Questions? Call Customer Service at: 610-684-4036. After hours and weekends please call 1-800-736-4753.

Jservice@lifetouch.com

HELP FUND AN AFTER-SCHOOL CLUB: PARTICIPATE IN THE BOXTOP PROGRAM!



OUR GOAL:

100% FAMILY PARTICIPATION

**50 Boxtops Or Equivalent
Per Family Per Month**

OPTION 1: CLIP-MORE

1. Download the Boxtops app for bonus tops and coupons!

<https://www.Boxtops4education.Com/bonusapp>

Choose 19104 zipcode and select sadie alexander

2. Register your Shoprite and Sam's Club cards online for bonus tops & coupons.

<https://www.Boxtops4education.Com/earn/in-store-offers>

3. Clip, save, and send in coupons in an envelope with your child in the pony.

4. Maximize your impact, ask friends and family to participate, too.

OPTION 2: CLIP-LESS

1. Don't have time to clip coupons but still want to make an impact?

Make a **ONE TIME** donation of \$45 *(the equivalent of option 1)*

Include this form along with check or cash in your child's pony.

Child's Name: _____

Child's Class Number: _____

Donation Amount: _____

- **Are you curious what Trapezium Math Club is all about?**
- **Do you wonder if this might be a good fit for your child?**
- **Are you thinking about signing up, but you're not quite sure?**

If you answered "yes" to any of these questions, please come to our December Showcase!



SHOWCASE

Saturday, December 8th
2:30-4:30PM

International House Philadelphia | 3701 Chestnut Street, Philadelphia, PA 19104

Admission is free but RSVP is required

RSVP on [Eventbrite.com](https://www.eventbrite.com)!

Search: Trapezium Math Club Fall Showcase

November

AT PENN

Wherever this symbol appears, more images are available on our website, www.upenn.edu/almanac/at-penn-calendar

ACADEMIC CALENDAR

- NOV** Advance registration for spring term. Through November 11.
- 9** Last day to withdraw from a course.
- 10** Homecoming (Harvard).
- 20** Thurs-Fri class schedule on Tues-Wed. Through November 21.
- 22** Thanksgiving Break. Through November 25.
- 26** Classes resume.

CHILDREN'S ACTIVITIES

Annenberg Center
Tickets and info: annenbergcenter.org
8 *The Prince and the Woodpecker*: a family musical adapted from *The Prince and the Pea*; 7:30 p.m.; Harold Prince Theatre. Also *November 9*, 7:30 p.m. and *November 10*, 1 and 4 p.m.

Lightbox Film Center at IHP
\$5 (ages 2+), free for members. Tickets: www.lightboxfilmcenter.org/family-matinee
17 *KidFix 1*: New York International Children's Film Festival's 2018 Best of the Fest; 2 p.m., family matinee.

Morris Arboretum
Info: morrisarboretum.org
2 *Storytime at the Arboretum*; 10:30 a.m.; Outdoor Children's Classroom.
23 *Holiday Garden Rail Seasonal Opening*; 10 a.m.; Garden Railway. Open through December 31 (except December 24-25).

Penn Museum
Info: www.penn.museum
6 *Museum Playdates: Trickster Tales*; geared for families with children ages 3-6, includes illustrated stories, hands-on reproduction artifacts and make-and-take art activities; 10:30 a.m.

10 *Archaeology in the A.M.*; designed for teens and young adults with developmental or intellectual disabilities; 10 a.m.; free w/admission.
Second Saturdays: Worn & Adorn; explore museum, design your own necklace; 11 a.m.-4 p.m.; free w/admission.
16 *40 Winks at the Penn Museum*; ages 6-12, sleepover; 5:30 p.m.; admission: \$55; \$45 for museum members. Through November 17, 9 a.m.

CONFERENCES

2 *2018 Penn India Research Symposium*; 2-6 p.m.; Perry World House; register: <https://tinyurl.com/8kqzcvu> (Penn Global).

3 *Script and Sound in Old Chinese*; 9 a.m.-6 p.m.; Nevil Classroom, Penn Museum; register: padpoll@sas.upenn.edu (East Asian Languages and Civilizations). Through November 4.

8 *Fifth Annual Microbiome Symposium: Microbes, Metabolomics and Modern Diseases*; 8 a.m.-7 p.m.; Glen Gaulton Auditorium, BRB II/III; begins November 7 with a 6 p.m. talk by science writer Carl Zimmer at Penn Vet; register: <https://tinyurl.com/ybdr6v3w> (Center for Host-microbial Interactions, PennCHOP Microbiome Program).

12 *Intermediate Filaments: Cytoskeletal Mechanics, Motility and the Nucleus*; PMI Fall Institute; 7 a.m.-7 p.m.; Rubenstein Auditorium, Smlow Center; register: www.med.upenn.edu/pmi (Penn Muscle Institute).

Entrepreneur Bootcamp: Education Startup Issues; 1-4:30 p.m.; Catalyst @ Penn GSE; register: <https://tinyurl.com/y838wvnr> (Catalyst @ Penn GSE).

15 *After the Care Crisis*; 6 p.m.; Amado Recital Hall, Irvine Auditorium; register: <http://web.sas.upenn.edu/after-the-care-crisis> (Population Studies Center). Through November 16, 9:45 a.m.-5 p.m.

16 *Antinomies of Democracy*; 9 a.m.-5 p.m.; PCPSE; register: <https://tinyurl.com/yb2wgh6> (African Studies).

EXHIBITS

Admission Donations and Hours
Arthur Ross Gallery (ARG); Fisher Fine Arts Library; free; hours: www.arthrossgallery.org

Broadsky Gallery, Kelly Writers House; free; hours: <https://writing.upenn.edu/wh/involved/series/broadsky-gallery/>

Burrison Gallery, Inn at Penn; free; Mon.-Fri., 7:30 a.m.-5 p.m.; <http://tinyurl.com/kaevlc>

Esther Klein Gallery; free; Mon.-Sat., 9 a.m.-5 p.m.; <http://estherklein-gallery.com>

ICA; free; hours: <https://icaphila.org>
International House; free; hours: <http://ihousephilly.org>

Kroiz Gallery, Fisher Fine Arts Library; free; Mon.-Fri., 9 a.m.-4 p.m.; <http://tinyurl.com/lvrtf4>

Morris Arboretum; hours, prices: morrisarboretum.org

Penn Museum; \$15/adults; \$13/seniors; \$10/children; free/members. PennCard holders and children under 5; Tues.-Sun, 10 a.m.-5 p.m.; first Wed., 10 a.m.-8 p.m.; www.penn.museum

Slought; free; Tues.-Fri., noon-5 p.m.; slought.org

Van Pelt-Dietrich Library; free; hours: <http://www.library.upenn.edu/vanpelt>
Wistar: Mon.-Fri., 9 a.m.-5 p.m.; <https://wistar.org>

Upcoming
6 *Brodsky Gallery Opening: Liana Finck*; 6 p.m.

8 *Homecoming Show: Burrison Gallery*; reception: November 9, 3:30-6:30 p.m. Through November 15.

17 *Blue*; Andrea Dimofte; Burrison Gallery; reception: November 30, 5:30 p.m. Through December 21.

Now
Seas and Cities; Lisa Reindorf's work deals with the interaction of manmade infrastructure and natural systems; Burrison Gallery. Through November 5.

William Kenridge: Universal Archive; Arthur Ross Gallery. Through November 11.

OK I'll Do It Myself: Narratives of Intrepid Women in the American Wilderness; selections from the Caroline F. Schimmell Collection of Women in the American Wilderness; Goldstein Family and Kamin Galleries, Van Pelt. Through November 11.

BioArt and Bacteria; Anna Dumitriu; EKG. Through November 24.

Cultures in the Crossfire: Stories from Syria and Iraq; shedding light on the ongoing destruction of cultural heritage in the Middle East; Penn Museum. Through November 26.

The Geometry of Matter: Kirigami and the Art of Building Space; Meyerson Hall. Through December 3.

Truth & Image; artwork that absorbs, captivates, transfixes and delivers the viewer to newly imagined destinations; East Alceve Gallery, IHP. Info: www.davinciantalliance.org/calls/truthimage Through December 15.

Drawing: Laurie Olin; seven decades of work; Kroiz Gallery, Architectural Archives. Through December 20.

Gauleen Smith: Give It or Leave It; films, objects and installations; ICA. Through December 23.

Ree Morton: The Plant That Heals May Also Poison; ICA. Through December 23.

And So The Story Goes: Innovations in Storytelling; Penn Museum. Through March 17, 2019.

Thomas Evans and the Professional Press; Leon Levy Dental Medicine Library. Through April 12, 2019.

Musical Partnerships at Play: The Marlboro Music School and Festival; Eugene Ormandy Gallery, Van Pelt. Through June 21, 2019.

Bearing Witness: Four Days in West Kingston; Penn Museum. Through December 2, 2019.

Moundbuilders: Ancient Artifacts of North America; Penn Museum. Through December 2, 2019.

Ongoing
Audubon's Birds of America; 1st Floor, Van Pelt.

Imagery, Narrative, Propaganda: Artists in the German Democratic Republic; rm. 500, Annenberg School (Annenberg School).

Marian Anderson on the World Stage; Marian Anderson Gallery, Van Pelt.

Middle East Galleries; ancient Mesopotamian societies that gave rise to the world's first cities; Penn Museum.

Natives American Voices: The People—Here and Now; Penn Museum.

Out of Time; 12 photos or paintings by artists and dancer Raphael Xavier; Lobby, Annenberg Center.

We Are Not Alone; an exhibit of 10 large-scale illustrations by cartoonist and freelance writer Dwayne Booth; Forum, Annenberg School.

Penn Museum Tours
Gallery Tours; Saturdays-Sundays, 1:30 p.m.; Pepper Hall; free with admission; info: www.penn.museum/visit/tours

Global Guides public tours; Saturdays-Sundays, 2:30 p.m.; free with admission.

FILMS

11 *Poi.E: The Story of our Song*; 2 p.m.; Penn Museum; free w/museum admission (Museum).

13 *Until and Unless: Decriminalizing Queer India*; 5:30 p.m.; I-House; RSVP: <https://tinyurl.com/9yvscca> (Annenberg School).

10 *Folk and Indie*; 9:30 p.m.

Lightbox Film Center at IHP

Tickets: \$10, \$8 students/seniors, free for members. Screenings at 7 p.m. Info: www.lightboxfilmcenter.org

1 *Staring Back at the Sun: Parts I & II*.
2 *The Ballad of Shirley Collins*.
3 *Staring Back at the Sun: Parts III & IV*.
16 *Soleil Ô (Oh, Sun!)*.
17 *One Sings, the Other Doesn't*.
29 *Reza Abdoh: Theatre Visionary*.
30 *New Italian Cinema 2018*.

IHP: Gershman Jewish Film Festival
Screenings at 7 p.m. Info: www.lightboxfilmcenter.org

5 *Anthrax*.
12 *Gentleman's Agreement*.

ICA: Asian American Film Festival
Info: <https://icaphila.org>
Also see *Fitness and Learning*.

10 *Drawn Together: Comics, Diversity, and Stereotypes*; 11 a.m.
Futbolistas 4 Life; 12:15 p.m.
Musical Shorts; 1:15 p.m.
Havana Divas; 3 p.m.

Workshop: Sining Kapuluan; 5 p.m.
11 *Forbidden City, USA*; 2 p.m.

IHP: Asian American Film Festival
Info: www.lightboxfilmcenter.org
Also see *Music*.

8 *In the Life of Music*; 7 p.m.
9 *Moving Parts*; 5 p.m.
10 *Surviving Bokator*; 7 p.m.
10 *Call Her Ganda*; 3:30 p.m.
For Izzy; 5:45 p.m.
Fiction and Other Realities; 7:35 p.m.

11 *Sci-Fi Genre Shorts*; 3 p.m.
Anote's Ark; 4:30 p.m.
Ulam: Main Dish; 6:15 p.m.

MEETINGS

8 *PPSA Board Meeting*; 1 p.m.; Duhring Wing; RSVP: ppsa@lists.upenn.edu

13 *WPSPA Board Meeting*; 12:30 p.m.; Conference Room 201, B Wing, 3401 Walnut Street.

14 *WXPN Policy Board Meeting*; noon; WXPN; info: (215) 698-0628.

MUSIC

2 *It Was a Dark and Stormy Night*; acapella show; 9 p.m.; Iron Gate Theatre; tickets: \$9; group discounts available (ACK). Also *November 3*, 6:30 p.m.

Sori Network; Penn Sori acapella show; 9 p.m.; Harold Prince Theatre, Annenberg Center; tickets: \$8; group discounts available (ACK). Also *November 3*, 6 p.m.

7 *Drum Circle Workshop*; drum with Philly's own master world percussionist Joseph Tayoum; 6:30 p.m.; Penn Museum (Museum). Every Wednesday through November 28.

Annenberg Center
Tickets and info: annenbergcenter.org

1 *The Routes of Slavery*; Jordi Savall, music interpreter; 7:30 p.m.; Zellerbach Theatre. Also 12:30 p.m. free performance for University students, faculty and staff. Register: cpedano@uc.upenn.edu or (215) 573-8827.

3 *T.S. Monk*; drummer, bandleader and composer; 8 p.m.; Zellerbach Theatre.

11 *Bela Fleck, Zakir Hussain & Edgar Meyer*; classical, bluegrass and world music; 7 p.m.; Zellerbach Theatre.

17 *Nobuntu*; African a cappella quintet; 8 p.m.; Zellerbach Theatre.

Penn Music Department
Info: www.sas.upenn.edu/music

2 *Penn Sound Collective*; new works by student composers; 8 p.m.; Rose Recital Hall, Fisher-Bennett Hall (Penn Composers' Guild).

7 *Penn Baroque Ensemble*; 8 p.m.; Rose Recital Hall, Fisher-Bennett Hall.

9 *Music in the Pavilion*; Meg Bragle, mezzo-soprano; 7:30 p.m.; Class of 1978 Orrery Pavilion, Van Pelt (Kislak Center).

10 *University Choir*; Emily Sung, music director; 8 p.m.; St. Mary's Church, 3916 Locust Walk; tickets: \$5/general; free/PennCard.

17 *Penn Wind Ensemble*; Michael Ketter, music director; 8 p.m.; Irvine Auditorium; tickets: \$5/general; free/PennCard.

28 *Rochberg @ 100*; Mark Livshits, piano; 8 p.m.; rm. 419, Fisher-Bennett Hall.

IHP: Asian American Film Festival
Info: www.lightboxfilmcenter.org
Also see *Films*.

9 *Traditional and Hip Hop*; 9:30 p.m.

10 *Folk and Indie*; 9:30 p.m.

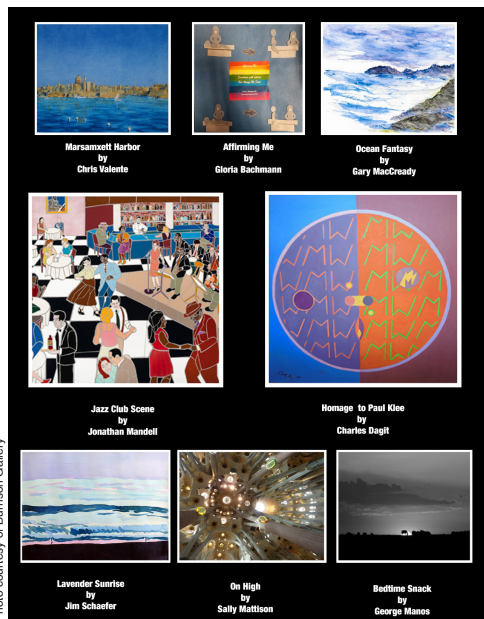


Photo courtesy of Burrison Gallery

Homecoming Show featuring alumni artists at Burrison Gallery. See Exhibits.

World Cafe Live
Performances daily. Complete listing and tickets: www.worldcafelive.com

ON STAGE

- 2** *Diaspora Through the Decades: Finding Our Way Home*; Onda Latina and The Inspiration; Iron Gate Theatre; 6 p.m.; tickets: \$12/door, \$10/Locust Walk; group discounts (SAC). Also *November 3*, 1 and 8:30 p.m.
- 9** *Traveling White Black*; solo performance by Edris Cooper-Ani-fowoshe; 7 p.m.; Penn Museum; \$15. Also *November 10*, 7 p.m. (Museum).

Annenberg Center
Tickets and info: annenbergcenter.org

1 *Beckett Shorts*; Samuel Beckett's short plays and film; 7 p.m.; Bruce Montgomery Theatre. Also *November 2*, 7 p.m.; *November 3*, 7 p.m.; *November 4*, 2 p.m.

2 *Yellow Face*; Front Row Theatre Co.; 6 p.m.; Harold Prince Theatre (TAC-e). Also *November 3*, 2 and 9 p.m.

20 *Potted Potter: The Unauthorized Harry Experience*; a comedic condensing of all seven Harry Potter books; 7:30 p.m.; Zellerbach Theatre. Also *November 21*, 7:30 p.m.; *November 23*, 2 and 8 p.m.; *November 24*, 2 and 8 p.m.; *November 25*, 2 p.m.

30 *Jessica Lang Dance*; 8 p.m.; Zellerbach Theatre.

READINGS & SIGNINGS

6 *Back to Black: Retelling Black Radicalism for the 21st Century*; Kehinde Andrews; 5:30 p.m.; 330A Seminar Room, 3401 Walnut St. (African Studies).

10 *Penn Alumni Reading Club*; Mary Frances Berry; 9:30 a.m.; Sweeten Alumni House or Online (African Studies).

14 *The Culture of Surveillance: Watching as a Way of Life*; David Lyon; noon; rm. 500, Annenberg School (Annenberg School).

Penn Bookstore
Info: www.upenn.edu/bookstore

5 *Black Men Teaching in Urban Schools*; Edward Brockenbrough; 6 p.m.

8 *When's Happy Hour: Work Hard So You Can Hardly Work?*; Betches Media; 6 p.m.

9 *On the Cusp: The Women of Penn '64*; Anne Sceia Klein; 2 p.m.

10 *Benjamin Rush: The Visionary Doctor who Became a Founding Father*; Stephen Fried; 11:30 a.m.

12 *The Eating Instinct*; Virginia Sole-Smith; 6 p.m.

20 *History Teaches Us to Resist: How Progressive Movements Have Succeeded in Challenging Times*; Mary Frances Berry; 5:30 p.m.

Kelly Writers House
Events held at the Arts Café. RSVP: wh@writing.upenn.edu

1 *Building on the Archive: PennSound, Poetry Audio, and New Scholarship in Sound Studies*; Jason Camlot, Lytle Shaw, and Orchid Tierney; noon.

RealArts Presents Alex Koppelman; 5 p.m.

7 *The Future of Ecopoetics*; Evelyn Reilly and Joshua Schuster; noon.

Speakeasy Open Mic Night; 7:30 p.m.

8 *Desegregation Remix*; Janice Lowe and Lee Ann Brown; 6 p.m.

9 *Kristallnacht: 80 Years Later*; noon.

10 *Rediscovering Benjamin Rush*; Stephen Fried (C79); 4 p.m.

12 *Writing About TV: Magic*; Jamie Albrecht, Erin Cross, Rodney Daley, Torin Pennelly, Mikey Ilegan and Heidi Kallou; 6 p.m.

14 *Lunch with Eugene Ostashevsky*; noon.

Weike Wang: Cheryl J. Family Fiction Reading; 6 p.m.

15 *Lunch with Dana Milbank*; noon. A Poetry Reading by Al Young; 6 p.m.

27 *Whenever We Feel Like It*; Laynie Browne, Connie Yu and Bianca Stone; 6 p.m.

28 *Lunch with Rander Hutter Epstein*; noon.

A Poetry Reading by Laura Henriksen and Benjamin Krusling; 6 p.m.

29 A Poetry Reading by Denise Frohman and Cindy Jimenez-Vera; 6 p.m.

SPECIAL EVENTS

1 *Penn Appetit: WHISK Cookbook Launch*; 7 p.m.; ICA; register: <https://tinyurl.com/9cvgth6>

6 *Election Day*; polls open 7 a.m.-8 p.m.; visit www.votespa.com to find your PA polling place.

7 *The Living Legacy of George Nakashima*; 2 p.m.; Morris Arboretum; register: <https://tinyurl.com/y5r962x>

11 *Eagles Watch Party at Houston Hall*; football in the bistro; 8:20 p.m. vs. Cowboys (Perelman Quad). Also *November 18* vs. Saints at 1 p.m.

12 *Veterans Day Flag Raising Ceremony*; keynote speaker: Jill DiSanto, Penn Communications; 9 a.m.; College Green, Locust Walk (Penn Engineering, OAA-EOP, Veterans Upward Bound, The Steven A. Cohen Military Family Clinic).

27 *The Pitch: Live from the Wharton School*; live podcast show with Jillian Manus, Structure Capital; Phil Nadel, Forefront Ventures; and Josh Muccio. The Pitch; 4:30 p.m.; rm. G-06, Huntsman Hall (Penn Wharton Entrepreneurship).

Alumni Homecoming Weekend

9 See full list of events at bit.ly/2yJfj. Through November 11.

SPORTS

Tickets & venues: www.pennathletics.com

2 (W) *Swimming vs. Columbia*; 3 p.m.

3 (M) *Swimming vs. Columbia*; 1 p.m.

9 (W) *Volleyball vs. Dartmouth*; 3 p.m.

10 (M) *Basketball vs. Rice*; 8 p.m.

10 (W) *Football vs. Harvard*; 1 p.m.

(W) *Volleyball vs. Harvard*; 5 p.m.

(M) *Soccer vs. Harvard*; 5 p.m.

13 (M) *Basketball vs. Lafayette*; 7 p.m.

15 (W) *Basketball vs. Saint Joseph's*; 7 p.m.

17 (W) *Basketball vs. NJIT*

TALKS

1 Robustness Quantification and Robust Optimization in Intensity-Modulated Proton Therapy; Wei Liu, Mayo Clinic College of Medicine; 9 a.m.; Austrian Auditorium, CRB (CCBB).
Ultrafast Nonlinear IR Spectroscopy for Exotic Molecular Materials; Wei Xiong, UC San Diego; 1 p.m.; Carol Lynch Lecture Hall (Chemistry).
Protein Molecular Dynamics and Health; Abhinav Nath, Univ. of Washington; 3 p.m.; Lynch Room, Chemistry Bldg. (Chemistry).
What Explains the Racial Gaps in Task Assignments and Pay over the Life-Cycle?; Limor Golan, Washington Univ. in St. Louis; 3:30 p.m.; rm. 200, PCPSE (Economics).
Implications of Gene-Environment Correlation for Behavior Genetics: Lessons From Drosophila Melanogaster; Julia Saltz, Rice Univ.; 4 p.m.; Tedor Auditorium, Levin Bldg. (Biology).
Claudin 18 is a Novel Regulator of Lung Epithelial Stem/Progenitor Cell Homeostasis, IAP Signaling and Tumorigenesis; Zeev Borok, USC; 4 p.m.; rm. 11-146, Smilow Center (Penn Center for Pulmonary Biology).
Seek the World; Calvin Young, deaf travel blogger; 6:30 p.m.; rm. B6, Stiteler Hall (Wolf Humanities Center).
2 Basal Slip of Glaciers: Experimental Results in Support of Rate-Weakening Drags; Neal Irvine, Iowa State; 2 p.m.; rm. 358, Hayden Hall (EES).
Jan Mostaert: Tradition and Invention in Sixteenth-Century Haarlem; Katelyn Hobbs, Penn PhD candidate; 3:30 p.m.; rm. 113, Jaffe Bldg. (History of Art).
3 Confrontations with Capitalism: Land, Labor and Health in the Andes; Thomas Leatherman, UMass, Amherst; noon; rm. 345, Penn Museum (Anthropology).
Micro Theory Lunch; Qingmin Liu, economics; noon; rm. 200, PCPSE (Economics).
Aggregating the Information in Survey Density Forecasts; Frank Diebold, economics; noon; rm. 203, PCPSE (Economics).
Can "Little Angels" Tell About Homeostatic Sleep Mechanisms; Jason DeBruyne, Morehouse School of Medicine; noon; rm. 10-146, Smilow Center (Systems Pharmacology and Translational Therapeutics).
Locating the Central Asiatic Expedition; Lukas Rieppel, Brown; 3:30 p.m.; rm. 337, Claudia Cohen Hall (EHS).
The Textual Production of a Shared Black Edge; Margo Crawford, English; 5:15 p.m.; Class of 1978 Pavilion, Van Pelt (English).
Prosecuting Soviet Capitalism: The Kholm Affair, Kiev, 1952; Juliette Cadot, Ecole des Hautes Etudes en Sciences Sociales; 6 p.m.; rm. 209, College Hall (REES).
Visualizing Extinction; Joshua Schuster, Western Univ.; 6 p.m.; Slough (Slough).
6 Glycosylation: Linking Metabolism and Signaling in Cancer and Beyond; Mauricio Reginato, Drexel; noon; Gaulton Auditorium, BRB (Abramson Family Cancer Research Institute).

1 Wistar's Women & Science Program: Innovating, Funding and Delivering Vaccines for a Changing World; Ruxandra Draghia, Merck Global Vaccines; 6 p.m.; Wistar Institute; price: \$75, \$50 per person for groups of 10 (Wistar Institute).
2 Yoga with Arisha; bring your own mat; noon; Ross Gallery; \$5/fitness/staff; free/students. Also November 9.
29 Discovering Penn's Financial Wellness Resources; noon; location TBD; RSVP: <https://ppsa.upenn.edu> (PPSA).
HR: Professional and Personal Development Programs
 Open to faculty and staff. Register: www.knowledgelink.upenn.edu
6 Coaching Skills for Managers; 9 a.m.-noon; \$75.
13 TED Talk Tuesday: What's the Secret to Great Opportunities?; 12:30 p.m.
15 Flexible Work Options; 12:30 p.m.
HR: Penn Healthy You Workshops
7 Flu Vaccine Clinic; 9 a.m.-2 p.m.; Houston Hall. Also November 27.
16 November Wellness Walk: A Season of Thanks; noon-1 p.m.; Locust Walk (in front of College Hall).
30 Flu Vaccine Clinic; 9 a.m.-2 p.m.; Morris Arboretum.
HR: Be in the Know Biometric Screening Locations
 9 a.m.-2 p.m. Register: www.hr.upenn.edu/myhr/registration
2 Penn Vet.
5 Penn Law Levy Conference Room.
7 Houston Hall. Also November 27, 28.
8 Penn Vet.
9 FRES.
12 SEAS, Raiser Lounge.
13 Penn Nursing, Fagin Hall.
14 Hoover Lounge, Vance Hall.
19 Perelman Center for Advanced Medicine.
20 BRB Lobby. Also November 29.
30 Morris Arboretum.
HR: Work-life Workshops
 Open to faculty and staff; free. Register at www.hr.upenn.edu/myhr/registration
1 Success in School: Preparing Kids for the Classroom; noon.

TALKS

Micro Theory Seminar; Mohammad Akbarpour, Stanford; 4 p.m.; rm. 203, PCPSE (Economics).
Molecular Mechanisms and Host-Mediation Therapies in Mucosal Inflammatory Disease; George Hajishengallis, microbiology; 4 p.m.; Austrian Auditorium, CRB (Immunology).
7 Arctic Journalisms, Civic Spaces and Indigenous Publics; Candis Callison, Univ. of British Columbia; noon; rm. 500, Annenberg School (Annenberg School).
Recent Findings from RAND's GIM Policy in America Initiative; Andrew Morral, Rand Corporation; noon; rm. 395, McNeil Bldg. (Criminology).
Multi HIV-Antigen Specific T Cells as a Cure Strategy; Catherine Bollard, Children's National Health System; noon; Austrian Auditorium and Lobby, CRB (Microbiology).
The Human Microbiome in Human Reproduction and Women's Health; Rick Bushman, microbiology; noon; rm. 252, BRB (CRRWH).
Short-Range Correlation Studies in Nuclei; Or Hen, MIT; 4 p.m.; rm. A8, DR (Physics & Astronomy).
Cleaved and Structural Approaches to Manipulating Cell Death; Richard Kistis, Albert Einstein College of Medicine; 4 p.m.; rm. 11-146AB, Smilow Center (CVI).
Accessing the DMCA Twenty Years Later; Shayamkrishna Balaganesh, Penn Law; Peter Decherney, English; Corinne Microne, Ballard Spahr; rm. 240B, Silverman Hall (Penn Law).
Race and Sex in the Time of Trump; Maya Wiley, The New School; 5:30 p.m.; rm. 245A, Silverman Hall (Africana Studies, Law School).
Protecting Stuff Today: Cultural Heritage Sites and the Penn Museum; Brian Daniels, Penn Cultural Heritage Center; 6 p.m.; tickets: <https://tinyurl.com/yfsvjvjo> (Penn Museum).
Science Reporting in the Age of Fake News; Carl Zimmer, The New York Times; 6 p.m.; rm. 131, Hill Pavilion (Center for Host-microbial Interactions, PennCHOP Microbiome Program).
William Kenridge's Triumphs and Laments; Carlos Basualdo, PMA; 6 p.m.; Arthur Ross Gallery (ARG).
Beyond Surface; Dorit Aviv, Penn Design; 6:30 p.m.; Lower Gallery, Meyerson Hall (PennDesign).
It's Not Funny: The Subversive Politics of Comedy; Kelli Dunham and Robin Cloud, comedians; 7 p.m.; rm. 200, College Hall; rsvp: www.sus.upenn.edu/gsws/events (GWSW/APC).
8 Immunosuppression Practices After Liver Transplantation are Highly Variable and Predict Outcomes; Theresa Bittner, PSOM; 9 a.m.; Austrian Auditorium, CRB (Center for Clinical Epidemiology and Biostatistics).
Reprogramming Root Cells for Endosymbiosis with Arbuscular Mycorrhizal Fungi; Maria Harrison, Cornell; 4 p.m.; Tedor Family Auditorium, Levin Bldg. (Biology).
Media Activism Research Collective and Lecture; Stephen Duncombe, NYU; noon; rm. 224, Annenberg School; RSVP: tinyurl.com/ybormovg (Annenberg School).

FITNESS AND LEARNING

6 Guided Meditation; 12:30 p.m. Also November 30.
Managing Stress in the Workplace; 1 p.m.
7 Conflict Resolution; 12:30 p.m.
12 Investing 101 Workshop; noon.
14 Mindfulness; 12:30 p.m.
27 Being an Effective Team Member; 12:30 p.m.
28 Vanguard Live Webinar: Vanguard's Principles of Investing; noon and 6 p.m. Also November 29, 3 p.m.
Vanguard Live Webinar—Financial Freedom: Strategies for Reducing Debt and Saving More; 3 p.m. Also November 29, noon and 6 p.m.
ICA: Asian American Film Festival
 Info: <https://icaphilla.org>
10 Workshop: Sining Kapuluan; Byron Au Yong, Univ. of San Francisco; 5 p.m.
11 Workshop: Activist Songbook; Byron Au Yong, composer, Aaron Jafferis, writer; Lei Ouyang Bryant, Swarthmore; 11:45 a.m.
Workshop: Word to Your Motherland: South Asian American Hip Hop; Anwar Desai, Stephens, Eastman School of Music; 1:15 p.m.
Institute of Contemporary Art
 Info: <https://icaphilla.org>
2 Mindfulness at the Museum with Kate Johnson; guided meditation; noon.
9 Mindfulness at the Museum with Shesheena Bruy; guided meditation; noon.
Liberal & Professional Studies
 Register: www.upenn.edu/lps-events
1 Master of Chemical Sciences Virtual Information Session; 5:30 p.m.
6 Master of Environmental Studies Virtual Café; noon.
7 Master of Chemical Sciences Open House; 11 a.m.-5:30 p.m.
Walk-in Wednesdays: Meet the College of Liberal and Professional Studies; 11 a.m.-1 p.m. and 4:30-6 p.m. Also November 14, 21, 28.
8 Post-Baccalaureate Studies Virtual Information Session; 5:30 p.m.
13 Master of Liberal Arts On-Campus Information Session; 5 p.m.

TALKS

The Tea in Politics; talk informally with political science faculty; 1:30 p.m.; rm. 250, PCPSE (Political Science, Pi Sigma Alpha's Beta Tau Chapter).
Firm Choice of Wage-Setting Practices in the Presence of Minimum Wages; Joseph Mullins, Western Univ.; 3:30 p.m.; rm. 200, PCPSE (Economics).
Canary in the Coalmine: Detecting and Assessing Brain Injury Through Sensory Neural Responses; Jonathan Fisher, New York Medical College; 4 p.m.; Austrian Auditorium, CRB (Physiology).
Think Me Nothing? Raising Awareness of the Black Deaf Community; Ritchie Bryant, National Technical Institute of the Deaf; 5 p.m.; rm. B-1, Meyerson Hall (Linguistics, Wolf Humanities Center).
Renaissance Humanism and Universities: The Case of Bologna; David Lines, Univ. of Warwick; 5:30 p.m.; rm. 627, Van Pelt (Italian Studies).
Poetry Reading Combined with a Discussion of Surface; Eric Schmalz, author; 6 p.m.; rm. 330, Fisher-Bennett Hall (English).
"And Now I Have to Read in Jewish Something"; Yiddish Performances by Holocaust Survivors; Jeffrey Shandler, Rutgers; 6 p.m.; rm. 200, PCPSE (Jewish Studies).
The Politics of Health; Jonathan Metz, Vanderbilt; 6:30 p.m.; Slough (Slough).
9 Multidisciplinary Immunology & Transplantation Interest Conference; Michael Cancro, pathology & laboratory medicine; 3 p.m.; Transplant Conference Room, HUP (Penn Institute for Immunology).
On The Grothendieck-Teichmüller Group; Lela Schnepp, CNRS Paris VI; 3:15 p.m.; rm. 4N30, DRL (Math).
Warhol's Universalizing Queerness; Jonathan Katz, Univ. of Buffalo; 3:30 p.m.; rm. 113, Jaffe Bldg. (History of Art).
60 Second Lectures: Alumni Edition; assorted Penn Arts and Sciences alumni; noon; Quakerfest Mainstage, College Green (SAS).
11 Militarism, Masculinity, and the Music of Asian America; Mandi Magnuson-Hung, Wells Fargo History Museum; Alan Parkes, NYU; Dan Blim, Denison Univ.; Donna Kwon, Univ. of Kentucky; 10:15 a.m.; ICA (Philadelphia Asian-American Film Festival). Also see Exhibits.
12 Deepwater Sovereignty, or the Political Theology of the Petrostate; Ryan Jobson, Univ. of Chicago; noon; rm. 345, Penn Museum (Anthropology).
Oral Delivery of Protein Drugs: Enhance Affordability and Patient Compliance; Henry Daniell, biochemistry; noon; rm. 10-146, Smilow Center (SPAT).
Review of the Midterm Election; Dick Polman, WHYU; noon; Hourglass Room, Inn at Penn; rsvp: pasef@pobox.upenn.edu (PASEF).
International Organizations and Political Economy; Ana Carolina Garriga, Center for Research and Teaching in Economics; 3 p.m.; rm. 225, PCPSE (LALSES).
Notes for a History of Cigarette

Bachelor of Applied Arts and Sciences Virtual Information Session; 5:30 p.m.
14 Fels Institute of Government Virtual Information Session; 6 p.m.
Organizational Dynamics On-Campus Information Session; 6 p.m.
15 Master of Applied Positive Psychology On-Campus Information Session; 5:30 p.m.
Morris Arboretum
 Info: morisarboretum.org
3 Winter Wellness Walks; Saturdays at 10:30 a.m., Sundays at 1 p.m.; Visitor Center. Also November 4, 10, 11, 17, 18, 24, 25.
Saturday Morning Live Tour; discover native trees; 11 a.m. Also November 10, 17, and 24.
10 Holly Highlights and Winter Greenery Tour; 2 p.m.; Visitor Center. Also November 24.
Penn Home Ownership Services
15 First-Time Homebuyers 103: Title, Settlement & Miscellaneous; Trident Mortgage Company; Auditorium, BRB.
Penn Ice Rink, Class of 1923 Arena
 Prices & Info: www.upenn.edu/icerink
11 Homecoming Staff; free admission with PennCard; 1 p.m.
17 Thanksgiving Food Drive Skate; \$2 off admission with a non-perishable food donation; 4:30 p.m.
Penn Museum
 Info: www.pennmuseum.org
7 Ancient Scripts and Modern Kitchens: six-week course on history of herbs; 10:30 a.m. Also November 14, 28.
9 Coffee with a Keeper; breakfast and discussion with Lucy Fowler Williams, associate curator; 9:30 a.m.; tickets: \$5/ general; free/members.
10 Traveling White Black: Masterclass for Theatre Artists; Edris Cooper-Anifowese, director; discussion of Black roles in tourism, colonialism and culture; 1 p.m.; free/w/ admission.
Penn Vet Working Dog Center
 Register: <https://tinyurl.com/ydgcag9g>
17 Fit to Work Seminar; dogs and handlers are invited to learn strengthening and conditioning exercises to maintain an injury-free mission-ready partner; 8:30 a.m.-4:30 p.m.; Penn Vet Working Dog Center (Penn Vet Working Dog Center).

TALKS



Conquest of America Landscape, Mostaert. See Jan Mostaert: Tradition and Invention in Sixteenth-Century Haarlem on November 2 in Talks.

Smoking in Modern Buenos Aires; Diego Armus, Swarthmore; 3:30 p.m.; rm. 337, Cohen Hall (HSS).
Pockets of Predictability; Leland Farmer, Univ. of Virginia; 4:30 p.m.; rm. 200, PCPSE (Economics).
"But a Copie": Lucie Hatcher's Life in Her Texts; David Norbrook, Oxford; 5:15 p.m.; Class of 1978 Pavilion, Kislak Center, Van Pelt (English).
13 Preparing Materials for the Academic Job Market; Cathy Turner, Center for Teaching and Learning; noon; rm. 344, Fisher-Bennett Hall; rsvp: www.sus.upenn.edu/gsws/events (GWSW/APC).
Racialities: Perspectives in Spanish Heritage Language Curricular Materials; Erica Saldívar Garcia, EDD student, GSE; noon; Forum Room, PCPSE (LALSES).
Micro Theory Seminar; Geoffrey de Cippel, Brown; 4 p.m.; rm. 200, PCPSE (Economics).
Industrial Organization Seminar; Nick Buchholz, Princeton; 3:30 p.m.; rm. 101, PCPSE (Economics).
Beta Cell Functional Genomics in Healthy and Diabetic States; Amanda Ackerman, CHOP; 4 p.m.; rm. 12-146AB, Smilow Center (Institute for Diabetes, Obesity and Metabolism).
Trained Immunity: A Memory for Innate Host Defense; Mital Netea, Nijmegen Univ.; 4 p.m.; Austrian Auditorium, CRB (Immunology).
Intellectual Property: The New Global Currency; Osagie Imberger, Penn Law; 4:30 p.m.; rm. 240A, Silverman Hall (Penn Law).
14 'I Don't Believe in Vaccines'; Erol Kfirig, Yale; noon; Austrian Auditorium and Lobby, CRB (Microbiology).
Novel Nanoprobes for the Detection and Treatment of Gliomas; J. Manuel Perez, Cedars-Sinai Medical Center; noon; rm. 10-146, Smilow Center (CT3N).
Effects of Mitochondrial Genetics on Tumor Cells: The Microenvironment and Metastasis; Danny Welch, CHOP; noon; Caplan Auditorium, Wistar Institute (Abramson Family Cancer Research Institute).
Women & Money: Balancing Competing Savings Priorities for faculty only; Pat Burke, Mill Creek Capital Advisors, LLC; 3 p.m.; location TBA; RSVP: <https://tinyurl.com/y8rfkgs5> (Penn Forum for Women Faculty).
Differential Equation Axiomatization; Andre Platzer, Carnegie Mellon; 3:30 p.m.; rm. A4, DRL (Math).
Human Knotout Project; Danish Saleheen, biostatistics and epidemiology; 4 p.m.; rm. 11-146, Smilow Center (CVI).
Rittenhouse Lecture; George Efsthathiou, Cambridge; 4 p.m.; rm. A8, DRL (Physics & Astronomy).
Repatriating Tribal Objects in the Digital Age: 3D Replicas at the Smithsonian; Eric Hollinger, Repatriation Office, National Museum of Natural History; 5 p.m.; Widener Auditorium, Penn Museum; preceded by a behind the scenes tour of the Penn Museum at 4 p.m.; register: wolfhumanities.upenn.edu (Wolf Humanities Center, Penn Museum, Price Lab for Digital Humanities).
15 Progress Towards Evidence Based Therapies in Autoimmune Skin Disease; Victoria Werth, dermatology; 10 a.m.; Auditorium, Smilow Center (SBDRC).
Contemporary Issues in Scientific Publishing; Lewis Kaplan, Darren Taichman, Richard James, Brigitte Burris; 10:30 a.m.; Meyerson Conference Room, Van Pelt; RSVP: pasef@pobox.upenn.edu (PASEF).
Climate Change & Health: The Hidden Threat; Alice Hill, Stanford; noon; Amado Recital Hall, Irvine Auditorium (Center for Public Health Initiatives).
Knowledge by the Slice: Democracy and Truth; Sophia Rosenfeld, history; noon; Cafe 58, Irvine Auditorium (SAS).
Molecular Adaptations to Unique Lifestyle in Mammalian Hibernators; Elena Gracheva, Yale; 4 p.m.; Tedor Family Auditorium, Levin Bldg. (Biology).
Is Immigration Good or Bad for Democracy?; P.J. Bredese, Johns Hopkins; Ariane Chebel D'Appollonia, Rutgers; Elizabeth Cohen, Syracuse; 4-6 p.m.; World Forum, Perry World House (The Andrea Mitchell Center, The Penn-Temple European Studies Colloquium).
Trans Literacy Project: Teaching

TALKS

Beyond the Gender Binary; Erin Cross, LGBT Center, Monica Kramer, French; Jama Shelton, Hunter College; 5:30 p.m.; LGBT Center; RSVP: www.sus.upenn.edu/gsws/events (GWSW/APC, LGTB Center).
The Human Body as Generic Form; Gertrud Koch, Freie Universität Berlin; 5:15 p.m.; Slough (Slough, Temple Film and Media Arts, Cinema Studies Program, Department of Germanic Languages and Literatures).
16 Spectral Democrats: The Effects of Education for All Policies on Political Behavior in India; Emmerich Davies, Harvard; noon; PCPSE (CAS).
17 Quechua & Rap, Urban and Contemporary Indigenous Culture; Liberato Kani, Quechua activist; 1:30 p.m.; Perry World House (LALSES).
19 Molecular Dynamics Simulations Harnessed by Machine Learning to Understand Regulation of Opioid Receptor Signaling; Marta Filizola, Icahn School of Medicine; noon; rm. 10-146, Smilow Center (Systems Pharmacology and Translational Therapeutics).
Factor Models with Many Assets: Strong Factors, Weak Factors, and the Two-Pass Procedure; Anika Mikusheva, MIT; 4:30 p.m.; rm. 200, PCPSE (Economics).
Reading in Books; Samantha Sommers, Ohio State; 5:15 p.m.; Class of 1978 Pavilion, Kislak Center, Van Pelt (English).
26 Capitalism Between the Sheets: Sexual Economics Theory and the Commodification of Everyday Intimacy; Kristen Ghodsee, Russian and east European studies; noon; rm. 345, Penn Museum (Anthropology).
27 Of Mice and Men: Learning About Human Prostate Cancer By Using Mouse Models; Corinne Abate, Siena, Columbia; noon; Caplan Auditorium, Wistar Institute (Abramson Family Cancer Research Institute).
New Regulation of Mitochondria; Marcia Haigis, Harvard; 4 p.m.; Austrian Auditorium, CRB (Immunology).
Things You May Not Know about the Transcriptional Regulation of Metabolism; Mitchell Lizarz, PSOM; 4 p.m.; rm. 12-146AB, Smilow Center (Institute for Diabetes, Obesity, and Metabolism).
28 Host Micro Biome Interactions in Health and Disease; Eran Elinav, Weizmann Institute of Science; noon; Austrian Auditorium and Lobby, CRB (Microbiology).
The Continuing Care Retirement Community: One Option for Living in Retirement; Neville Strumpf, Penn Nursing; 3:30 p.m.; Class of 1978 Pavilion, Van Pelt; RSVP: pasef@pobox.upenn.edu (PASEF).
Genetic Studies of Human Hematopoiesis; Vijay Sankaran, Harvard; 4 p.m.; rm. 11-146AB, Smilow Center (CVI).
Re-Stuffing Theory, Re-Thinking Assemblage; Bill Brown, Univ. of Chicago; 5 p.m.; Rainey Auditorium, Penn Museum (Wolf Humanities Center, English).
29 Digesting Precarity: Digital Motherhood, Food Safety, and Health Panic in Vietnam; Giang Nguyen-Thu, Center for Advanced Research in Global Communication; noon; 6th Floor, 3901 Walnut St.; RSVP: marina.krakauer@asc.upenn.edu (Annenberg School).
Translating Cancer Biology into Novel Therapies; Dan Theodorescu, Samuel Oshchin Comprehensive Cancer Institute; noon; rm. 8-146AB, Smilow Center (Radiation Oncology).
Local Communication of Self-Identifying Infection Between Cells Modulates Emergent Behaviors of a Bacterial Swarm; Karine Gibbs, Harvard; 4 p.m.; Tedor Family Auditorium, Levin Bldg. (Biology).
30 The People's Republic of Craigislat and the Accidental Critique of a Genri-fying Internet; Jessa Lingel, Annenberg School; noon; rm. 500, Annenberg School (Annenberg School).
Objects of Special Notes: The Construction of Containment, Text, Writer, and Reader by Late Roman Ivory Writing Tablets; Ann Kuttner, History of Art; rm. 113, Jaffe Bldg. (History of Art).
The Malignant Progression of Breast Tumors; Robert Weinberg, MIT; noon; Rubenstein Auditorium, Smilow Center (Medicine).

