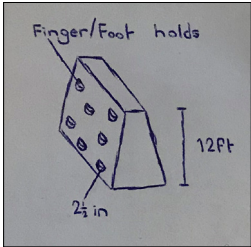
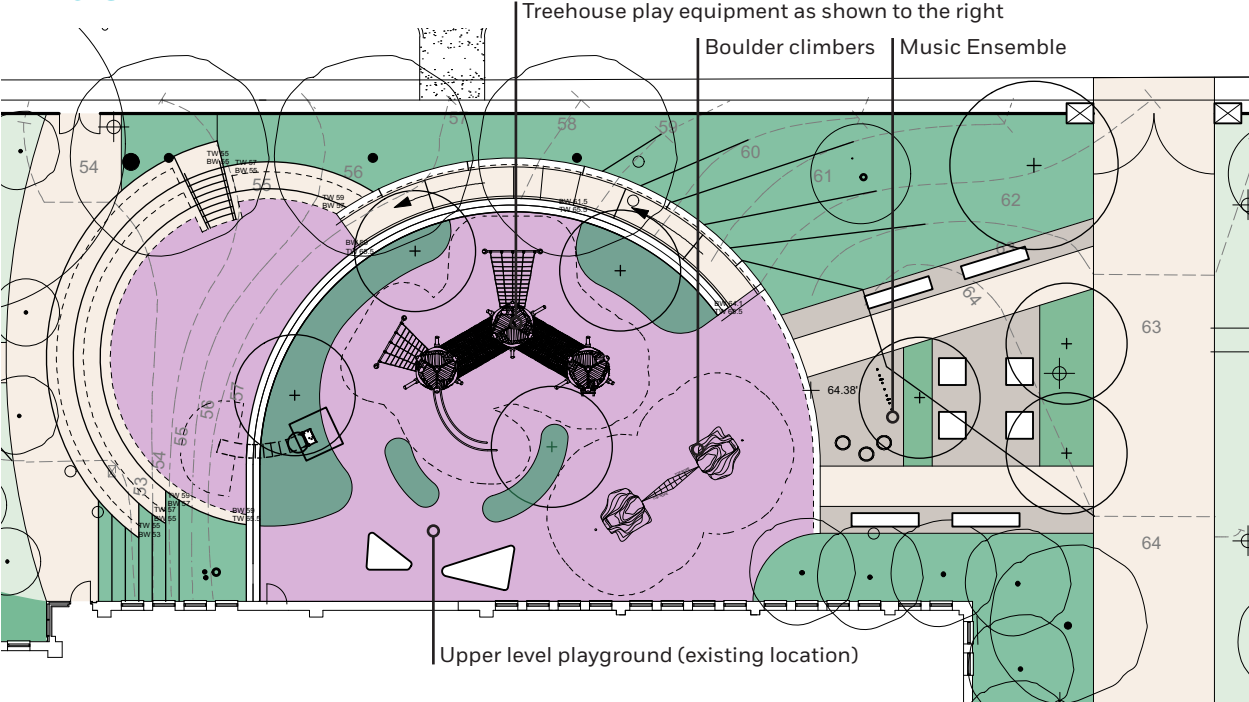
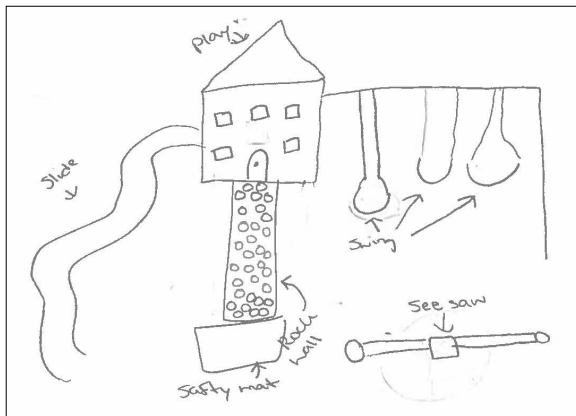
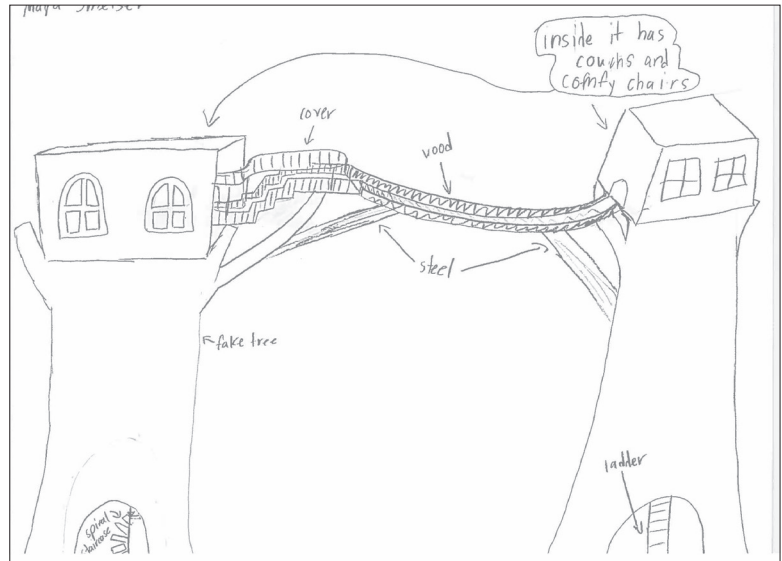


# Playground



Many students described wanting things to do that weren't so prescribed. They described opportunities for play that allowed you to be both alone and near everyone else.

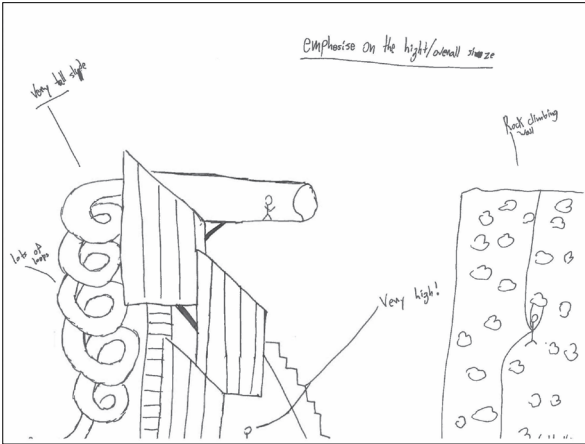
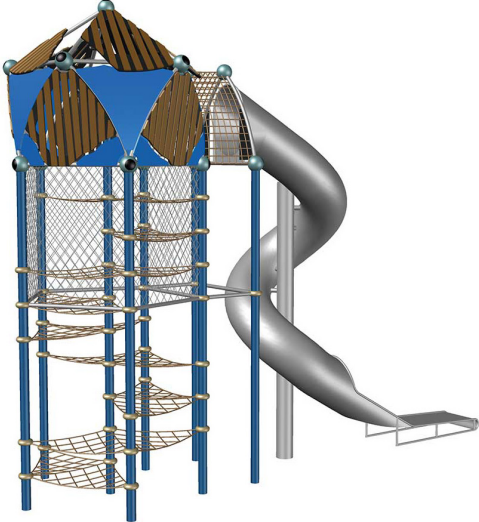
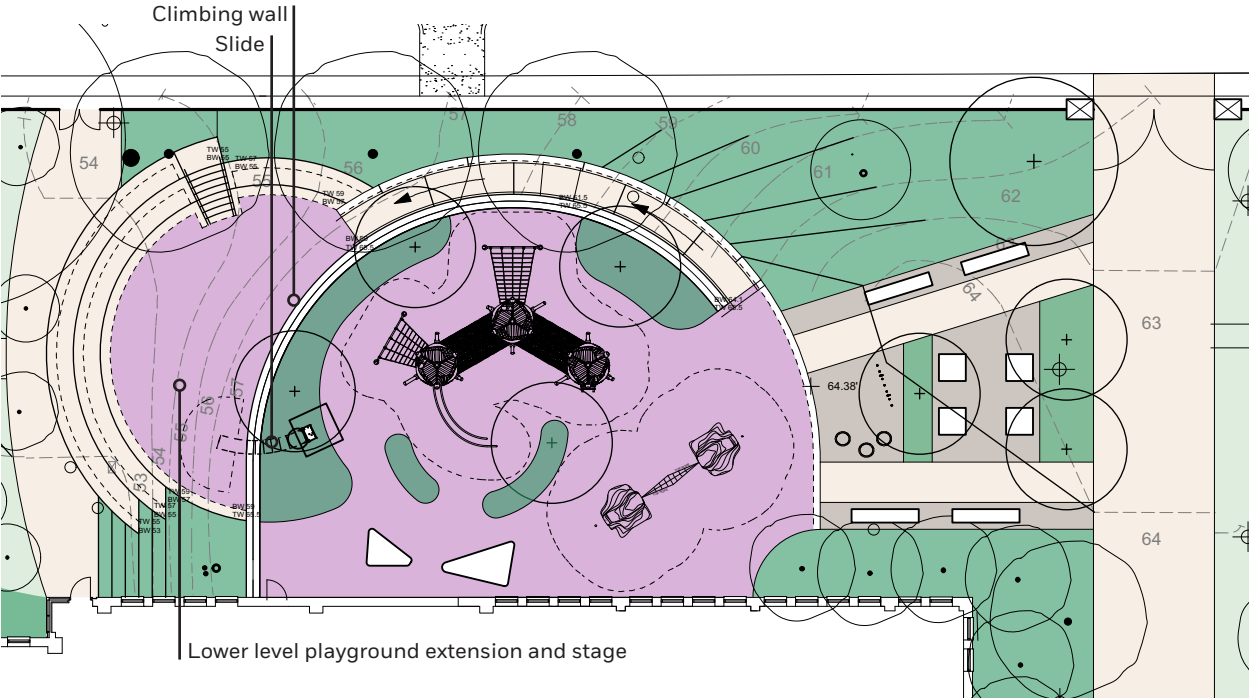


Students often mentioned climbing, tree houses, slides and swings. Many drew parkour-like circuits with lots of imagination in the context. Often, play equipment was noted as “very high”.





# Playground Extension/Stage







The stage offers a platform for learning and performance just outside the library. The stage also doubles as an extension of the playground sporting a climbing wall, slide, and ramp that connects upper and lower play areas.